

# SERVICE INFO



## Assembly instructions for axle nut 434 0431 10

**Vehicle manufacturer:** MAN

**Models:**

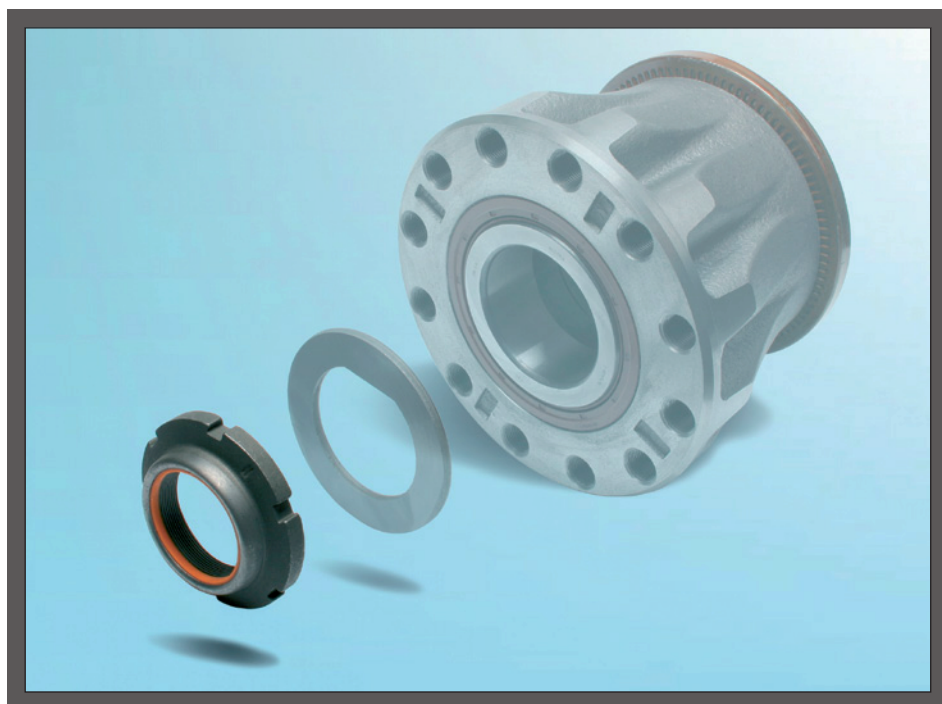
**Commercial vehicles:**

E Series, F 2000,  
M 2000 L, M 2000 M,  
TGA, TGM, TGS, TGX

**Coaches:** 18 ..., Lion's Coach,  
Lion's Star, NG, NL, NM,  
NÜ, RH, SG, SL, SÜ,  
Tourliner, ÜL

**OE number:** 81.90620-0086

**Part No.:** 434 0431 10 (axle nut)  
801974AE.H195 (TAM)



**Image 1:** The axle nut (434 0431 10) is available as an FAG accessory.

If the axle nut becomes loose when working on the steering swivel, when replacing the TAM (Truck Axle Module) 801974AE.H195 for instance, the axle nut will need to be replaced. This nut is a self-locking nut and may only be used once.

For this reason, Schaeffler Automotive Aftermarket is offering the axle nut (part number 434 0431 10) as part of its accessories with immediate effect.

Tightening torque: 740 Nm



Note the specifications of the vehicle manufacturer!

Appropriate spare parts can be found in our on-line catalogue at [www.Schaeffler-Aftermarket.com](http://www.Schaeffler-Aftermarket.com) or in RepXpert at [www.RepXpert.com](http://www.RepXpert.com).

Issued 05.2011

**FAG 0019**

Subject to technical changes  
© 2011 Schaeffler Automotive Aftermarket

Any reference to replacement part numbers for vehicle manufacturers is for comparison purposes only.

**For further information:**

Phone: +44 (0) 14 32 264 264\*

Fax: +44 (0) 14 32 375 760

Info@LuK-AS.co.uk

[www.Schaeffler-Aftermarket.com](http://www.Schaeffler-Aftermarket.com)

\* Calls from within the UK 08457 001100

# FAG