

# WINNARD

## TECHNICAL FOCUS WINNARD SPLINED BRAKE DISCS

The Original Equipment design of the Splined Brake Discs: 85103803 (WINNARD VO1071 Vented) & 3092710 (VO1083 Solid) are designed to have an easy slide on fitment to the hub.

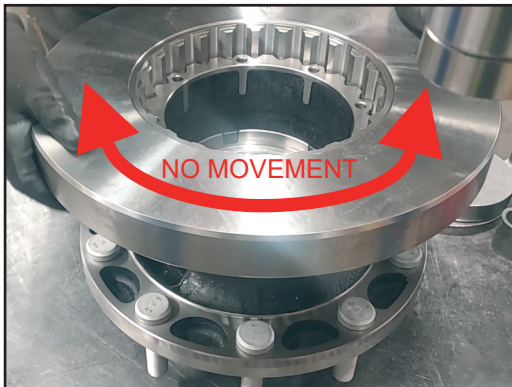
The WINNARD version has a tighter interference fit and will require the aid of a press, with 1.0 to 1.5 tons of pressure, to fully seat the onto the hub.

The WINNARD design has been developed in response to customer demand who prefer to have a tighter fitting Brake Disc, with no rotational movement on the Hub.

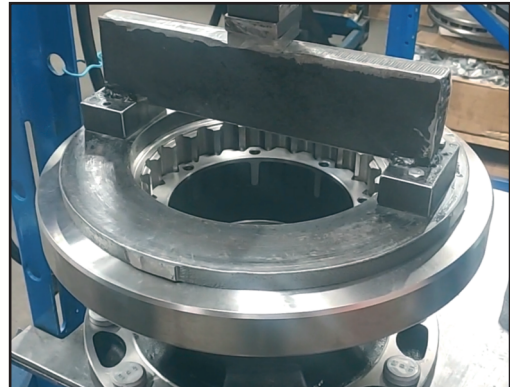
### WINNARD BRAKE DISC HUB INSTALLATION



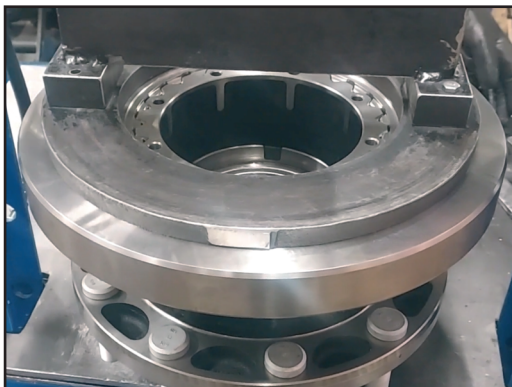
1. ALIGN THE BRAKE DISC SPLINES TO THE HUB



2. USE TOOLING TO SPREAD THE LOAD EVENLY AROUND THE DISC'S DIAMETER



3. PRESS THE DISCS UNTIL FULLY SEATED (USUALLY 1.0 to 1.5 Ton)



4. INSTALL THE FITTING KIT & TORQUE BOLTS (50Nm)

