



FAG Service Info



803750.10.H195

Supplied ABS ring must be used

Manufacturer: Bova
MAN
Mercedes-Benz
Neoplan
Scania
Setra
Volvo

Part no.: 803750.10.H195 (Repair Insert Unit)

See parts catalogue for current assignment

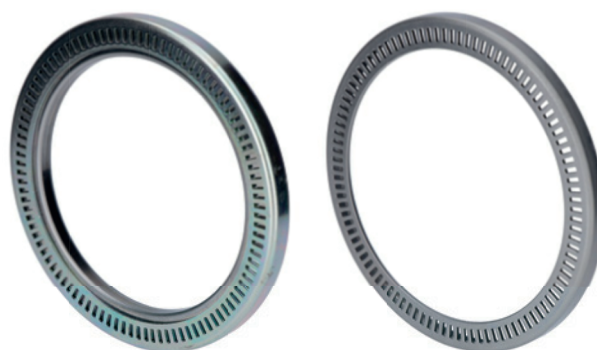


Image 1: The original cassette rotary shaft seal (left) must not be re-used. Instead, the ABS ring (right) supplied with the Repair Insert Unit (RIU) must be installed.

In most cases, an insert unit is installed ex works for the vehicle or axle manufacturers listed above. FAG offers the Repair Insert Unit (RIU), part number 803750.10.H195, as a repair solution.

The RIU is a pre-assembled, pre-greased and sealed unit. No additional seals are required. This enables faster and easier installation.

A suitable, model-specific ABS ring is supplied by Schaeffler Automotive Aftermarket. The dimensions of this ABS ring are different from the originally installed ABS cassette rotary shaft seal.

The supplied ABS ring must be used when installing the RIU. The original cassette rotary shaft seal must not be re-used.



Image 2: Insert Unit

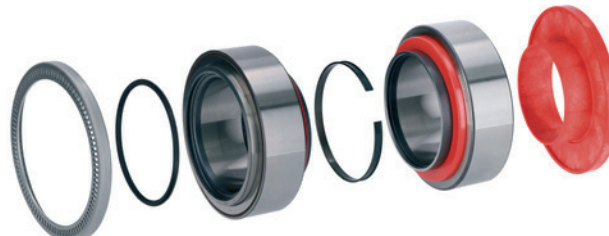


Image 3: Package content of the Repair Insert Unit (RIU) incl. ABS ring

You want more? We can help!

Phone: +44 (0) 1432 264
264 Fax: +44 (0) 1432 375
760 aftermarket.uk@schaeffler.com
www.repxpert.co.uk

SCHAEFFLER
REXPERT