

WINNARD

PRODUCT FOCUS

WHEEL END HUBS & HUB KITS

2026 EDITION



SCHAEFFLER
FAG
BEARINGS

**MOST HUB KITS NOW SUPPLIED
WITH WHEEL NUTS***

Thos. Winnard & Sons Ltd & Winnard France SAS 2026

* See listings and web site for details.
www.winnard.co.uk

WINNARD

NEW HUB & HUBKIT PACKAGING

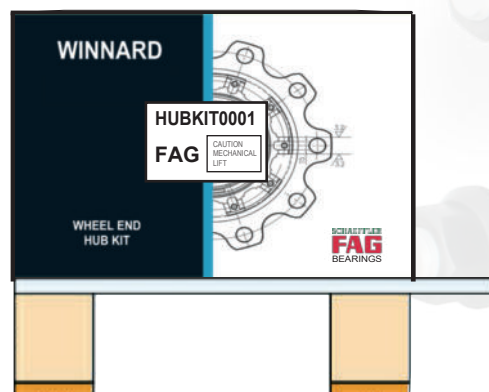
In response to customer demand, we have developed new packaging for the range of Winnard HUBS and HUBKITS.

From early November 2025, HUBS will be supplied in branded boxes*.



We're making some changes to how we ship our HUBKITS to make them safer and easier to move around. Starting in early 2026 (Q1), we will introduce new and improved pallets and packaging that should make a big difference for anyone who needs to handle them mechanically.

The goal is simple: better safety and less hassle.



New pallet suitable for all mechanical lifting equipment**



SCHAEFFLER
FAG
BEARINGS

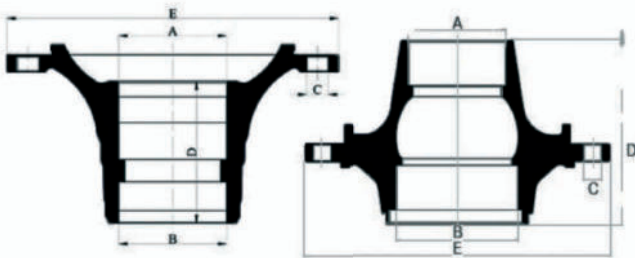
*Boxes will be strapped for security

**Some fork adjustment may be required to enable use on some equipment.

WINNARD

HUBS & HUBKITS

DIMENSION SPECIFICATION KEY



FRONT HUB

REAR & LIFT HUB



POPULAR HUBKITS ARE **PRE-BUILT READY TO SHIP** WITH DIFFERENT DISC WHEEL STUD CONFIGURATIONS. SEE WEB SITE FOR PART DETAILS



FAG BEARINGS FITTED WHERE AVAILABLE



BARE HUB (NO BEARING)

HUB WITH BEARING

WHEEL END KIT

HUB0001NB

SUPPLIED WITHOUT BEARING

HUB0001

SUPPLIED WITH FAG BEARING

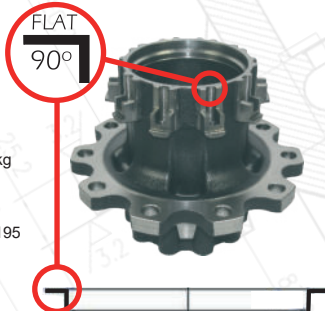
HUBKIT0001

SUPPLIED WITH FAG BEARING & ABS RING, BRAKE DISC, STUDS & NUTS

DAF

Specification

(A) OUTER BEARING DIA.:	148
(B) INNER BEARING DIA.:	148
(C) STUD HOLE DIA.:	25
(D) HEIGHT	295
(E) OUTER FLANGE DIA.:	381
WEIGHT	40 kg



USES FAG BEARING: 566283.01.H195

HUB OEM: 1657637, 1812161-



Identification tip:
ABS Ring, ABS0010 (FAG 434057910), is square.

Vehicle Applications

DAF CF, LF & XF	2000-
FODEN ALPHA	2001-
VAN HOOL T9	2003-

REAR AXLE



HUB OEM: 1657637, 1812161-

NOTES: FITTED WITH DA1063 BRAKE DISC, FAG BEARING & ABS RING. SOLID BRAKE DISC ALSO AVAILABLE.



HUB0002NB

SUPPLIED WITHOUT BEARING

HUB0002

SUPPLIED WITH FAG BEARING

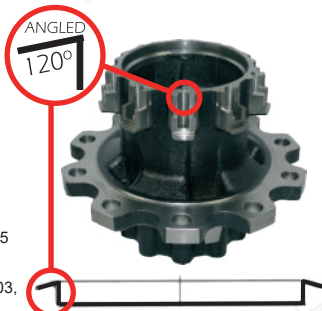
HUBKIT0002

SUPPLIED WITH FAG BEARING & ABS RING, BRAKE DISC, STUDS & NUTS

DAF

Specification

(A) OUTER BEARING DIA.:	148
(B) INNER BEARING DIA.:	148
(C) STUD HOLE DIA.:	25
(D) HEIGHT	287
(E) OUTER FLANGE DIA.:	381
WEIGHT	39 kg



USES FAG BEARING: 566283.01.H195

HUB OEM: 1389061, 1391617, 1818003, 1956108, 2015333, 2019853



Identification tip:
ABS Ring, ABS0012 (FAG 44340580100), is angled.

Vehicle Applications

DAF CF, LF & XF	2000-
FODEN ALPHA	2001-
VAN HOOL T9	2003-

REAR AXLE



HUB OEM: 1389061, 1391617, 1818003, 1956108, 2015333, 2019853

NOTES: FITTED WITH DA1063 BRAKE DISC, FAG BEARING & ABS RING. SOLID BRAKE DISC ALSO AVAILABLE.



BARE HUB (NO BEARING)

HUB WITH BEARING

WHEEL END KIT

HUB0003NB

SUPPLIED WITHOUT BEARING

Specification

(A) OUTER BEARING DIA.:	119.7
(B) INNER BEARING DIA.:	124.7
(C) STUD HOLE DIA.:	25
(D) HEIGHT	210
(E) OUTER FLANGE DIA.:	386
WEIGHT	29 kg

USES FAG BEARING: 566834.H195

HUB OEM: 1388905, 1391615, 1697346 but check hub design. O.E. & WINNARD versions have a petalled hub mounting face.

HUB0003

SUPPLIED WITH FAG BEARING



See part identification technical bulleting for HUB0003 & HUB0004. These hubs are frequently interchanged.

HUBKIT0003

SUPPLIED WITH FAG BEARING & ABS RING, BRAKE DISC, STUDS & NUTS

Vehicle Applications

DAF CF, LF & XF	2000-
FODEN ALPHA	2001-
VAN HOOL T9	2003-

FRONT AXLE



Hub Service Kist available: HUB CAP, LOCKING PLATES. PART# HSK0003



HUB OEM: 1388905, 1391615, 1697346.

NOTES: FITTED WITH DA1063 BRAKE DISC, FAG BEARING & ABS RING. SOLID BRAKE DISC ALSO AVAILABLE.

HUB0004NB

SUPPLIED WITHOUT BEARING

Specification

(A) OUTER BEARING DIA.:	125
(B) INNER BEARING DIA.:	125
(C) STUD HOLE DIA.:	25
(D) HEIGHT	210
(E) OUTER FLANGE DIA.:	383
WEIGHT	35 kg

USES FAG BEARING: 566074.H195

HUB OEM: 16912621, 1699327, 1818004 but check hub design. O.E. & WINNARD versions have a fully round hub mounting face.

HUB0004

SUPPLIED WITH FAG BEARING



See part identification technical bulleting for HUB0003 & HUB0004. These hubs are frequently interchanged.

HUBKIT0004

SUPPLIED WITH FAG BEARING & ABS RING, BRAKE DISC, STUDS & NUTS

Vehicle Applications

DAF CF, LF & XF	2000-
FODEN ALPHA	2001-
VAN HOOL T9	2003-

FRONT AXLE



Hub Service Kist available: HUB CAP, LOCKING PLATES. PART# HSK0004



HUB OEM: 16912621, 1699327, 1818004

NOTES: FITTED WITH DA1063 BRAKE DISC, FAG BEARING & ABS RING. SOLID BRAKE DISC ALSO AVAILABLE.

HUB0005NB

SUPPLIED WITHOUT BEARING

Specification

(A) OUTER BEARING DIA.:	125
(B) INNER BEARING DIA.:	125
(C) STUD HOLE DIA.:	27.2
(D) HEIGHT	223
(E) OUTER FLANGE DIA.:	383
WEIGHT	29.8 kg

USES FAG BEARING: 566426.H195

HUB OEM: 3092719, 3988831, 85101818, 85105693, 85111794, 85114471



See HUB0008 / HUBKIT0008 for Metric stud version

HUB0005

SUPPLIED WITH FAG BEARING



IMPERIAL STUD APPLICATION

HUBKIT0005

REN & VOLVO

SUPPLIED WITH FAG BEARING, ABS RING, BRAKE DISC & STUDS FITTED

Vehicle Applications

RENAULT PREMIUM VOLVO FH, FL, FM

FRONT & LIFT AXLE



IMPERIAL STUD APPLICATION



HUB OEM: 3092719, 3988831, 85101818, 85105693, 85111794, 85114471

NOTES: CAN BE FITTED WITH SOLID (434mm VO1083 / 410mm VO1078) or VENTED (434mm VO1071 / 410mm VO1079) BRAKE DISC.

WHEEL STUD OPTIONS: WS0004 (OEM 1573081 86mm) or WS0005 (OEM 3112593 77mm)

HUB0007NB

SUPPLIED WITHOUT BEARING

Specification

(A) OUTER BEARING DIA.:	148
(B) INNER BEARING DIA.:	148
(C) STUD HOLE DIA.:	25
(D) HEIGHT	270
(E) OUTER FLANGE DIA.:	383
WEIGHT	33.4 kg

USES FAG BEARING: 566425.H195

HUB OEM: 20535263, 7420535263, 7485107753, 85107753



Metric stud version of HUB0012 / HUBKIT0012

HUB0007

SUPPLIED WITH FAG BEARING



HUBKIT0007

REN & VOLVO

SUPPLIED WITH FAG BEARING, ABS RING, BRAKE DISC, STUDS & NUTS

Vehicle Applications

RENAULT PREMIUM VOLVO FH, FL, FM

REAR AXLE

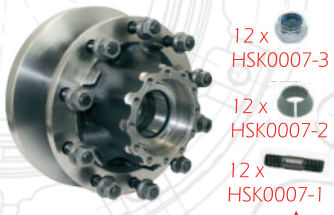


HUB OEM: 20535263, 7420535263, 7485107753, 85107753

NOTES: CAN BE FITTED WITH SOLID (434mm VO1083 / 410mm VO1078) or VENTED (434mm VO1071 / 410mm VO1079) BRAKE DISC.

WHEEL STUD OPTIONS: WS0012 (OEM 20515517 95mm) WS0014 (OEM 20515519 104mm) WS0015 (OEM 21147687 113mm)

*Half Shaft Service Kit available: PART# HSK0007



BARE HUB (NO BEARING) HUB WITH BEARING

HUB0008NB

SUPPLIED WITHOUT BEARING

Specification

(A) OUTER BEARING DIA.:	125
(B) INNER BEARING DIA.:	125/68*
(C) STUD HOLE DIA.:	25
(D) HEIGHT	222
(E) OUTER FLANGE DIA.:	383
WEIGHT	30.4 kg

* STUB AXLE DIA 68mm, see HUB0047 for 58mm version

USES FAG BEARING: 566426.H195

HUB OEM: 1026798, 20535202, 21116569, 3989341, 3988930, 85107750, 85111448, 85111791, 85114470

 Metric stud version of HUB0005 / HUBKIT0005

HUB0008

SUPPLIED WITH FAG BEARING



HUB0009NB

SUPPLIED WITHOUT BEARING

Specification

(A) OUTER BEARING DIA.:	148
(B) INNER BEARING DIA.:	148
(C) STUD HOLE DIA.:	25
(D) HEIGHT	226
(E) OUTER FLANGE DIA.:	383
WEIGHT	33 kg

USES FAG BEARING: 566425.H195

HUB OEM: 1026662, 20517168, 85107752, 85109244

HUB0009

SUPPLIED WITH FAG BEARING



HUB0012NB


SUPPLIED WITHOUT BEARING

Specification

(A) OUTER BEARING DIA.:	148
(B) INNER BEARING DIA.:	148
(C) STUD HOLE DIA.:	27.2
(D) HEIGHT	270
(E) OUTER FLANGE DIA.:	383
WEIGHT	33.2 kg

USES FAG BEARING: 566425.H195

HUB OEM: 20476383, 3988833, 3988837, 85105696

 Metric stud version is HUB0007 / HUBKIT0007

HUB0012

SUPPLIED WITH FAG BEARING



WHEEL END KIT

HUBKIT0008 REN & VOLVO

SUPPLIED WITH FAG BEARING, ABS RING, BRAKE DISC, STUDS & NUTS

Vehicle Applications

RENAULT PREMIUM
VOLVO BUS
VOLVO FH, FL, FM

FRONT AXLE

 * STUB AXLE DIAMETER 68mm, SEE HUB0047 FOR 58mm VERSION



NOTES: CAN BE FITTED WITH SOLID (434mm VO1083 / 410mm VO1078) or VENTED (434mm VO1071 / 410mm VO1079) BRAKE DISC.

WHEEL STUD OPTIONS:
WS0009 (OEM 20515514 78mm)
WS0010 (OEM 20515515 88mm)
WS0014 (OEM 20515519 104mm)

HUBKIT0009 REN & VOLVO

SUPPLIED WITH FAG BEARING, ABS RING, BRAKE DISC, STUDS & NUTS

Vehicle Applications

RENAULT PREMIUM
VOLVO BUS
VOLVO FH, FL, FM

REAR AXLE

 NOTES: CAN BE FITTED WITH SOLID (434mm VO1083 / 410mm VO1078) or VENTED (434mm VO1071 / 410mm VO1079) BRAKE DISC.



WHEEL STUD OPTIONS:
WS0012 (OEM 20515517 95mm)
WS0013 (OEM 20515518 100mm)
WS0014 (OEM 20515519 104mm)
See website for full options



HUBKIT0012 REN & VOLVO

SUPPLIED WITH FAG BEARING, ABS RING, BRAKE DISC, STUDS & NUTS

Vehicle Applications

RENAULT PREMIUM
VOLVO BUS
VOLVO FH, FL, FM

REAR AXLE

  IMPERIAL STUD APPLICATION



HUB OEM: 20476383, 3988833, 3988837, 85105696
NOTES: CAN BE FITTED WITH SOLID (434mm VO1083 / 410mm VO1078) or VENTED (434mm VO1071 / 410mm VO1079) BRAKE DISC.

WHEEL STUD OPTIONS:
WS0008 (OEM 3963997 95mm)
WS0006 (OEM 1573082 106mm)
WS0007 (OEM 1589009 110mm)

HUB0013NB

SUPPLIED WITHOUT BEARING

Specification

(A) OUTER BEARING DIA.:	110
(B) INNER BEARING DIA.:	110
(C) STUD HOLE DIA.:	25
(D) HEIGHT	224
(E) OUTER FLANGE DIA.:	383.5
WEIGHT	27.8 kg

USES FAG BEARING: 566427.H195

HUB OEM: 85107748, 85107749, 85111789

 Imperial stud version is HUB0024 / HUBKIT0024

HUB0013

SUPPLIED WITH FAG BEARING




HUBKIT0013 REN & VOLVO

SUPPLIED WITH FAG BEARING, ABS RING, BRAKE DISC, STUDS & NUTS

Vehicle Applications

RENAULT PREMIUM
VOLVO BUS
VOLVO FH, FL, FM

FRONT AXLE

 HUB OEM: 85107748, 85107749, 85111789



NOTES: CAN BE FITTED WITH SOLID (434mm VO1083 / 410mm VO1078) or VENTED (434mm VO1071 / 410mm VO1079) BRAKE DISC.

WHEEL STUD OPTIONS:
WS0009 (OEM 20515514 78mm)
WS0010 (OEM 20515515 88mm)
WS0011 (OEM 20515516 90mm)
See web site for full options

BARE HUB (NO BEARING)

HUB WITH BEARING

WHEEL END KIT

HUB0014NB

SUPPLIED WITHOUT BEARING

Specification	
(A) OUTER BEARING DIA.:	110
(B) INNER BEARING DIA.:	110
(C) STUD HOLE DIA.:	25
(D) HEIGHT	224
(E) OUTER FLANGE DIA.:	384
WEIGHT	25.4 kg

USES FAG BEARING: 566427.H195

HUB OEM: 121024206, 8505694, 85100557, 85107751, 85111790, 85111793

Imperial stud version is HUB0018 / HUBKIT0018

HUB0014

SUPPLIED WITH FAG BEARING



HUBKIT0014

REN / VOLVO

SUPPLIED WITH FAG BEARING & ABS RING, BRAKE DISC, STUDS & NUTS

Vehicle Applications

RENAULT PREMIUM-VOLVO FE / FH / FM

FRONT AXLE



HUB OEM: 121024206, 8505694, 85100557, 85107751, 85111790, 85111793

NOTES: CAN BE FITTED WITH SOLID (375mm VO1072) or VENTED (375mm VO1077 BRAKE DISC.

WHEEL STUD OPTIONS:

WS0009 (OEM 20515514 78mm)

WS0010 (OEM 20515515 88mm)

WS0014 (OEM 20515516 90mm)

See web site for full stud options

HUB0015NB

SUPPLIED WITHOUT BEARING

Specification	
(A) OUTER BEARING DIA.:	138
(B) INNER BEARING DIA.:	138
(C) STUD HOLE DIA.:	22
(D) HEIGHT	184
(E) OUTER FLANGE DIA.:	386
WEIGHT	25.6 kg

USES FAG BEARING: 566868.H195

HUB OEM: 3.307.3030.00, 3.307.3030.01, 3307303000, 3307303001

HUB0015

SUPPLIED WITH FAG BEARING



HUBKIT0015

SAF

HUBKIT NOT YET DEVELOPED

Vehicle Applications

SAF SK RB9019
SAF SK RB9022

TRAILER AXLE



HUB OEM: 3.307.3030.00, 3.307.3030.01, 3307303000, 3307303001

FITS WITH BRAKE DISC: SAU1030 or SAU1031

HUB0016NB

SUPPLIED WITHOUT BEARING

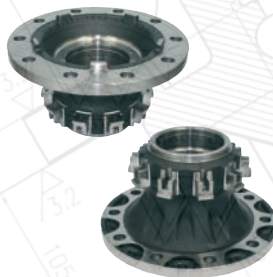
Specification	
(A) OUTER BEARING DIA.:	138
(B) INNER BEARING DIA.:	138
(C) STUD HOLE DIA.:	22
(D) HEIGHT	154
(E) OUTER FLANGE DIA.:	383
WEIGHT	28.4 kg

USES FAG BEARING: 566193.H195

HUB OEM: 1428396, 1613331, 1812160

HUB0016

SUPPLIED WITH FAG BEARING



HUBKIT0016

DAF

SUPPLIED WITH FAG BEARING, ABS RING, BRAKE DISC, STUDS & NUTS

Vehicle Applications

DAF CF, LF & XF 2010-
With 9 Ton Axle

FRONT AXLE



HUB OEM: 1428396, 1613331, 1812160

NOTES: FITTED WITH DA1063 BRAKE DISC, FAG BEARING & ABS RING. SOLID BRAKE DISC ALSO AVAILABLE.

HUB0018NB

SUPPLIED WITHOUT BEARING

Specification	
(A) OUTER BEARING DIA.:	110
(B) INNER BEARING DIA.:	110
(C) STUD HOLE DIA.:	27.3
(D) HEIGHT	224
(E) OUTER FLANGE DIA.:	384
WEIGHT	25.4 kg

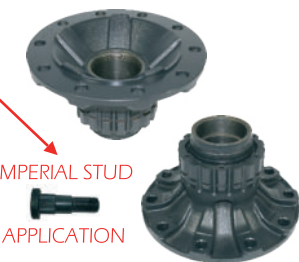
USES FAG BEARING: 566427.H195

HUB OEM: 85105694, 85111793

Metric stud version is HUB0014 / HUBKIT0014

HUB0018

SUPPLIED WITH FAG BEARING



IMPERIAL STUD APPLICATION

HUBKIT0018

REN / VOLVO

SUPPLIED WITH FAG BEARING, ABS RING, BRAKE DISC, STUDS & NUTS

Vehicle Applications

VOLVO (Various applications)

FRONT AXLE



IMPERIAL STUD APPLICATION



HUB OEM: 85105694, 85111793

NOTES: CAN BE FITTED WITH SOLID (375mm VO1072) or VENTED (375mm VO1077 BRAKE DISC.

WHEEL STUD OPTIONS:

WS0004 (OEM 1573081 86mm)

WS0005 (OEM 3112593 115mm)

BARE HUB (NO BEARING)

HUB WITH BEARING

WHEEL END KIT

HUB0019NB

SUPPLIED WITHOUT BEARING

Specification

(A) OUTER BEARING DIA.:	148
(B) INNER BEARING DIA.:	148
(C) STUD HOLE DIA.:	27
(D) HEIGHT	226
(E) OUTER FLANGE DIA.:	383
WEIGHT	31.8 kg

USES FAG BEARING: 566425.H195

HUB OEM: 85105695

HUB0019

SUPPLIED WITH FAG BEARING



HUBKIT0019

REN / VOLVO

SUPPLIED WITH FAG BEARING & ABS RING, BRAKE DISC, STUDS & NUTS

Vehicle Applications

RENAULT & VOLVO
(Various applications)

LIFT AXLE



IMPERIAL STUD
APPLICATION



NOTES: CAN BE FITTED WITH SOLID (434mm VO1083 / 410mm VO1078) or VENTED (434mm VO1071 / 410mm VO1079) BRAKE DISC.

WHEEL STUD OPTIONS:

WS0004 (OEM 1573081 86mm)
WS0005 (OEM 3112593 115mm)

HUB0021NB

SUPPLIED WITHOUT BEARING

Specification

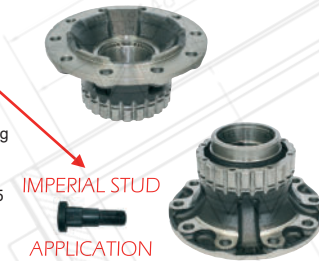
(A) OUTER BEARING DIA.:	130
(B) INNER BEARING DIA.:	130
(C) STUD HOLE DIA.:	27
(D) HEIGHT	224
(E) OUTER FLANGE DIA.:	383
WEIGHT	30.2 kg

USES FAG BEARING: 631903.05.H195

HUB OEM: 21102556, 21550437

HUB0021

SUPPLIED WITH FAG BEARING



HUBKIT0021

REN / VOLVO

SUPPLIED WITH FAG BEARING & ABS RING, BRAKE DISC, STUDS & NUTS

Vehicle Applications

RENAULT & VOLVO
(Various applications)

FRONT AXLE



IMPERIAL STUD
APPLICATION



NOTES: CAN BE FITTED WITH SOLID (434mm VO1083 / 410mm VO1078) or VENTED (434mm VO1071 / 410mm VO1079) BRAKE DISC.

WHEEL STUD OPTIONS:

WS0004 (OEM 1573081 86mm)
WS0005 (OEM 3112593 115mm)

HUB0024NB

SUPPLIED WITHOUT BEARING

Specification

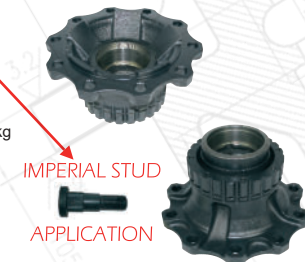
(A) OUTER BEARING DIA.:	110
(B) INNER BEARING DIA.:	110
(C) STUD HOLE DIA.:	27.2
(D) HEIGHT	224
(E) OUTER FLANGE DIA.:	383.5
WEIGHT	27.6 kg

USES FAG BEARING: 566427.H195

HUB OEM: 7410241087, 7421021381

HUB0024

SUPPLIED WITH FAG BEARING



HUBKIT0024

REN / VOLVO

SUPPLIED WITH FAG BEARING & ABS RING, BRAKE DISC, STUDS & NUTS

Vehicle Applications

RENAULT & VOLVO
(Various applications)

FRONT AXLE



IMPERIAL STUD
APPLICATION



NOTES: CAN BE FITTED WITH SOLID (434mm VO1083 / 410mm VO1078) or VENTED (434mm VO1071 / 410mm VO1079) BRAKE DISC.

WHEEL STUD OPTIONS:

WS0004 (OEM 1573081 86mm)
WS0005 (OEM 3112593 115mm)



Metric stud version is HUB0013 / HUBKIT0013

HUB0026NB

SUPPLIED WITHOUT BEARING

Specification

(A) OUTER BEARING DIA.:	148
(B) INNER BEARING DIA.:	148
(C) STUD HOLE DIA.:	25
(D) HEIGHT	287
(E) OUTER FLANGE DIA.:	383.4
WEIGHT	35.8 kg

USES FAG BEARING: 566425.H195

HUB OEM: 7420819859

HUB0026

SUPPLIED WITH FAG BEARING



HUBKIT0026

REN / VOLVO

SUPPLIED WITH FAG BEARING, ABS RING, BRAKE DISC, STUDS & NUTS

Vehicle Applications

RENAULT & VOLVO
Differential Axle)

REAR AXLE



IMPERIAL STUD
APPLICATION



NOTES: CAN BE FITTED WITH SOLID (434mm VO1083) or VENTED (434mm VO1071) BRAKE DISC.

WHEEL STUD OPTIONS:

WS0012 (OEM 20515517 95mm)
WS0013 (OEM 20515518 100mm)
WS0014 (OEM 20515519 104mm)
See website for full options

BARE HUB (NO BEARING) HUB WITH BEARING

HUB0029NB

SUPPLIED WITHOUT BEARING

Specification	
(A) OUTER BEARING DIA.:	148
(B) INNER BEARING DIA.:	148
(C) STUD HOLE DIA.:	25
(D) HEIGHT	192
(E) OUTER FLANGE DIA.:	384
WEIGHT	23.4 kg

USES FAG BEARING: 566425.H195

HUB OEM: 20518053, 20535244, 20535245, 21336855, 21336856, 21336857, 3988774

 Imperial stud version is HUB0040 / HUBKIT0040

HUB0029

SUPPLIED WITH FAG BEARING



WHEEL END KIT

HUBKIT0029

SUPPLIED WITH FAG BEARING, ABS RING, WHEEL STUDS & NUTS

Vehicle Applications

VOLVO
(Various applications)

REAR AXLE



**DRUM
OPTIONS**
VO1041
VO1042



WHEEL STUD OPTIONS:
WS0014 (OEM 20515519 104mm)
WS0005 (OEM 20553560 123mm)

NOTES: BRAKE DRUM NOT INCLUDED

HUB0032NB

SUPPLIED WITHOUT BEARING

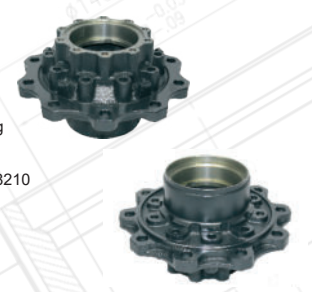
Specification	
(A) OUTER BEARING DIA.:	147
(B) INNER BEARING DIA.:	147
(C) STUD HOLE DIA.:	24
(D) HEIGHT	213.5
(E) OUTER FLANGE DIA.:	380
WEIGHT	24.4 kg

USES FAG BEARING: KHM218248.218210

HUB OEM: 1800283, 2290542

HUB0032

SUPPLIED WITH FAG BEARING



HUBKIT0032

SUPPLIED WITH FAG BEARING, ABS RING, BRAKE DISC, STUDS & NUTS

Vehicle Applications

SCANIA

**ROUND HEAD
WHEEL STUD**

REAR AXLE



**PRELOAD SLEEVE
AVAILABLE
HSK0032-1**



NOTES: CAN BE FITTED WITH VENTED (SC1023) or SOLID (SC1023S) BRAKE DISC

WHEEL STUD OPTIONS:
WS0024 (OEM 1868667 81mm)
WS0022 (OEM 1528712 85mm)
WS0021 (OEM 1528655 102mm)

HUB0033NB

SUPPLIED WITHOUT BEARING

Specification	
(A) OUTER BEARING DIA.:	148
(B) INNER BEARING DIA.:	148
(C) STUD HOLE DIA.:	25.3
(D) HEIGHT	157
(E) OUTER FLANGE DIA.:	385.5
WEIGHT	26.4 kg

USES FAG BEARING: 566425.H195

HUB OEM: 20535207, 20819804, 20819806, 20820402, 21328177, 21328181

HUB0033

SUPPLIED WITH FAG BEARING



HUBKIT0033

SUPPLIED WITH FAG BEARING, ABS RING, STUDS & NUTS

Vehicle Applications

VOLVO (DRUM BRAKE)

REAR AXLE



**DRUM
OPTIONS**

VO1041
VO1042



WHEEL STUD OPTIONS:
WS0014 (OEM 20515519 104mm)
WS0015 (OEM 21147687 113mm)

NOTES: BRAKE DRUM NOT INCLUDED

HUB0034NB

SUPPLIED WITHOUT BEARING

Specification	
(A) OUTER BEARING DIA.:	138
(B) INNER BEARING DIA.:	138
(C) STUD HOLE DIA.:	-
(D) HEIGHT	194
(E) OUTER FLANGE DIA.:	-
WEIGHT	27.2 kg

USES FAG BEARING: 2570530.H195

HUB OEM: SAF 03 307 3045 01, 03 307 3045 52, 03.307.3045.02, 03307304500, 03307308400, 03434312900S, 03434313000S, 1 307 3045 10, 3.307.3045.00, 3307304502, 3434312900S, 3434313000S

HUB0034

SUPPLIED WITH FAG BEARING



HUBKIT0038-377 / 430

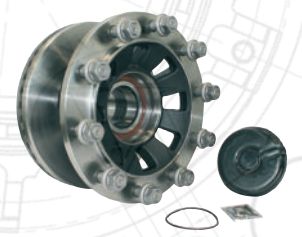
SAF

SUPPLIED WITH FAG BEARING, HUB BOLTS, ABS RING, HUB CAP, FIXINGS & WHEEL STUDS - OPTIONAL HANDED LOCKING HUB NUT

Vehicle Applications

SAF BI 19 2015-

TRAILER AXLE



NOTES: CAN BE FITTED WITH 430mm (SAU1031) or 377mm (SAU1030) DISC

BARE HUB (NO BEARING)**HUB0035NB**

SUPPLIED WITHOUT BEARING

Specification

(A) OUTER BEARING DIA.:	127.3
(B) INNER BEARING DIA.:	147
(C) STUD HOLE DIA.:	24
(D) HEIGHT	213.5
(E) OUTER FLANGE DIA.:	380
WEIGHT	24.4 kg

USES FAG BEARING: 571762.01.H195

HUB OEM: 1864430

HUB WITH BEARING**HUB0035**

SUPPLIED WITH FAG BEARING

**WHEEL END KIT****HUBKIT0035**

SUPPLIED WITH FAG BEARING, HUB BOLTS, ABS RING, HUB CAP, DISC, STUDS & NUTS

Vehicle Applications

SCANIA

FRONT AXLE

SCREW ON
HUB CAPROUND HEAD
WHEEL STUD

NOTES: CAN BE FITTED WITH VENTED (SC1023) or SOLID (SC1023S) BRAKE DISC

WHEEL STUD OPTIONS:

WS0023 (OEM 1868665 72mm)
WS0024 (OEM 1868667 81mm)

HUB0036NB

SUPPLIED WITHOUT BEARING

Specification

(A) OUTER BEARING DIA.:	127.3
(B) INNER BEARING DIA.:	127
(C) STUD HOLE DIA.:	24
(D) HEIGHT	137
(E) OUTER FLANGE DIA.:	375
WEIGHT	24.4 kg

USES FAG BEARING: 571762.01.H195

HUB OEM: 2290532

HUB0036

SUPPLIED WITH FAG BEARING

**HUBKIT0036**

SUPPLIED WITH FAG BEARING, ABS RING, STUDS & NUTS

Vehicle Applications

VOLVO (DRUM BRAKE)

FRONT AXLE

DRUM
OPTIONS

SC1021 203mm
SC1022 178mm



WHEEL STUD OPTIONS:

WS0023 (OEM 1868665 72mm)
WS0024 (OEM 1868667 81mm)

NOTES: BRAKE DRUM NOT INCLUDED

HUB0037NB

SUPPLIED WITHOUT BEARING

Specification

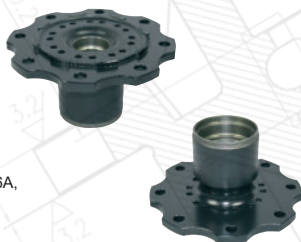
(A) OUTER BEARING DIA.:	112.6
(B) INNER BEARING DIA.:	62
(C) STUD HOLE DIA.:	24
(D) HEIGHT	169
(E) OUTER FLANGE DIA.:	15 kg
WEIGHT	

USES FAG BEARING: 1400078, 32206A, 26677690210, K39581.39520

HUB OEM: 1408100

HUB0037

SUPPLIED WITH FAG BEARING

**HUBKIT0037**

SUPPLIED WITH FAG BEARING, ABS RING, HUB BOLTS, DISC & STUDS

Vehicle Applications

DAF LF45 Series 12 Ton - PAN17

FRONT AXLE



NOTES: CAN BE FITTED WITH CAST ABS (DA1048) or STEEL (DA1054) DISC

HUB0038NB

SUPPLIED WITHOUT BEARING

Specification

(A) OUTER BEARING DIA.:	140
(B) INNER BEARING DIA.:	140
(C) STUD HOLE DIA.:	22
(D) HEIGHT	225
(E) OUTER FLANGE DIA.:	380
WEIGHT	25.2 kg

USES FAG BEARING: 805003A.H195

HUB OEM: 10003500535, 0003502335, A0003502335, A942010271, JAE0120802471

HUB0038

SUPPLIED WITH FAG BEARING

Supplied with hub bolts
HSK0038-3 when supplied
with bearing fitted**HUBKIT0038**

SUPPLIED WITH FAG BEARING, HUB BOLTS, ABS RING, HUB CAP, FIXINGS & WHEEL STUDS

Vehicle Applications

DISCOS, JOST DCA - TE - TL

TRAILER AXLE



NOTES: CAN BE FITTED WITH 430mm (MNE1065) or 377mm (MNE1108) DISC

WHEEL STUD OPTIONS:

WS0025 (OEM 0004012371 68mm) WS0027 (OEM 9463340015) 100 Teeth
WS0026 (OEM JAE012080247110 91mm) ABS0028 (OEM 9463340515) 90 Teeth

ABS RING OPTIONS:

ABS0027 (OEM 9463340015) 100 Teeth
ABS0028 (OEM 9463340515) 90 Teeth

BARE HUB (NO BEARING) HUB WITH BEARING

HUB0039NB

SUPPLIED WITHOUT BEARING

Specification

(A) OUTER BEARING DIA.:	62
(B) INNER BEARING DIA.:	95
(C) STUD HOLE DIA.:	19
(D) HEIGHT	144.5
(E) OUTER FLANGE DIA.:	XXX
WEIGHT	7.8 kg

USES FAG BEARING: 201080, 1400081

HUB OEM: 1407382, NJK3913RM

HUB0039

SUPPLIED WITH FAG BEARING



WHEEL END KIT

HUBKIT0039

SUPPLIED WITH FAG BEARING & ABS RING, SEAL & WHEEL STUDS

Vehicle Applications

DAF LF45 Series Exc 12 Ton - PAN17

FRONT AXLE



NOTES: FITTED WITH STEEL ABS RING BRAKE DISC - DA1051

HUB0040NB

SUPPLIED WITHOUT BEARING

Specification

(A) OUTER BEARING DIA.:	148
(B) INNER BEARING DIA.:	148
(C) STUD HOLE DIA.:	27.2
(D) HEIGHT	192
(E) OUTER FLANGE DIA.:	384
WEIGHT	23.4 kg

USES FAG BEARING: 566425.H195

HUB OEM: 20476519, 20518054, 3943982, 3988774



Metric stud version is HUB0029 / HUBKIT0029

HUB0040

SUPPLIED WITH FAG BEARING



HUBKIT0040

SUPPLIED WITH FAG BEARING & ABS RING & WHEEL STUDS

Vehicle Applications

VOLVO FH

WHEEL STUD OPTIONS:
WS0006 (OEM 1573082 102 mm)
WS0007 (OEM 1589009 110 mm)

REAR AXLE



DRUM OPTIONS

VO1041
VO1042



NOTES: BRAKE DRUM NOT INCLUDED

HUB0042NB

SUPPLIED WITHOUT BEARING

Specification

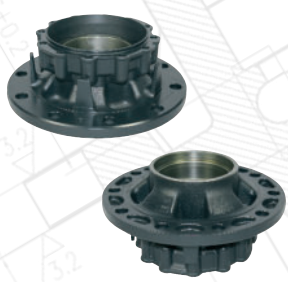
(A) OUTER BEARING DIA.:	148
(B) INNER BEARING DIA.:	148
(C) STUD HOLE DIA.:	25
(D) HEIGHT	197.5
(E) OUTER FLANGE DIA.:	383.5
WEIGHT	30.6 kg

USES FAG BEARING: 566425.H195

HUB OEM: 20499881, 20820420

HUB0042

SUPPLIED WITH FAG BEARING



HUBKIT0042

SUPPLIED WITH FAG BEARING & ABS RING & WHEEL STUDS

Vehicle Applications

VOLVO FH

WHEEL STUD OPTIONS:
WS0014 (OEM 20515519 104 mm)
WS0016 (OEM 20553560 122 mm)

REAR AXLE



DRUM OPTIONS

VO1041
VO1042



NOTES: BRAKE DRUM NOT INCLUDED

HUB0044NB

SUPPLIED WITHOUT BEARING

Specification

(A) OUTER BEARING DIA.:	138
(B) INNER BEARING DIA.:	138
(C) STUD HOLE DIA.:	22
(D) HEIGHT	170
(E) OUTER FLANGE DIA.:	380
WEIGHT	67 kg

USES FAG BEARING: 570530.05.AM

HUB OEM: 3307305600, 03307305600, 03307305601, 03307305602, 03307305603, 03307305653

HUB0044

SUPPLIED WITH FAG BEARING & ABS



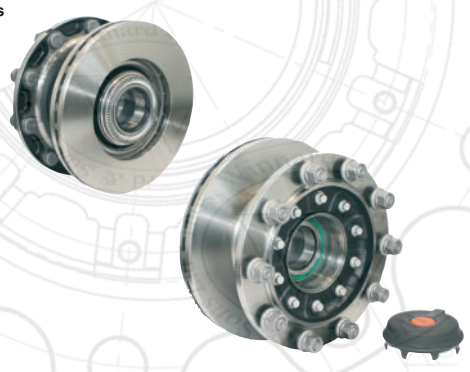
HUBKIT0044-377 / 430

SUPPLIED WITH FAG BEARING, ABS RING, EITHER 377 or 430 BRAKE DISC, 68mm WHEEL STUDS & NUTS

Vehicle Applications

SAF B9 2009-

TRAILER AXLE



NEW TO RANGE

BARE HUB (NO BEARING)

HUB WITH BEARING

WHEEL END KIT

HUB0046NB

SUPPLIED WITHOUT BEARING

Specification

(A) OUTER BEARING DIA.:	147
(B) INNER BEARING DIA.:	147
(C) STUD HOLE DIA.:	22.3
(D) HEIGHT	213.5
(E) OUTER FLANGE DIA.:	380
WEIGHT	29.8 kg

USES FAG BEARING: KHM218248.218210

HUB OEM: 1724790

HUB0046

SUPPLIED WITH FAG BEARING



HUBKIT0046

SUPPLIED WITH FAG BEARING & ABS RING, BRAKE DISC & STUDS

Vehicle Applications

SCANIA



REAR AXLE



PRELOAD SLEEVE AVAILABLE
HSK0032-1



NOTES: CAN BE FITTED WITH VENTED (SC1023) or SOLID (SC1023S) BRAKE DISC

WHEEL STUD OPTIONS:

WS0018 (OEM 0295953 85mm) - WS0019 (OEM 1368694 96mm) - WS0020 (OEM 1368695 102mm)

HUB0047NB

SUPPLIED WITHOUT BEARING

Specification

(A) OUTER BEARING DIA.:	115
(B) INNER BEARING DIA.:	115*
(C) STUD HOLE DIA.:	25
(D) HEIGHT	224
(E) OUTER FLANGE DIA.:	383
WEIGHT	33.2 kg

USES FAG BEARING: 21954677, 22479742, F-588258.TR2I, F-611766.TR2I, FAG0024

HUB OEM: 21940776, 21946101, 21953590, 21983587, 21983594, 7421940776, 7421946101, 7421983590



* Stub Axle Diameter is 58mm.
See HUB0008 and HUB0049 for 68mm Stub Axle Diameter

HUB0047

SUPPLIED WITH FAG BEARING



HUBKIT0047

SUPPLIED WITH FAG BEARING, ABS RING, BRAKE DISC, STUDS & NUTS

Vehicle Applications

RENAULT PREMIUM
VOLVO BUS
VOLVO FH, FL, FM

FRONT AXLE



NOTES: CAN BE FITTED WITH SOLID (434mm VO1083 / 410mm VO1078) or VENTED (434mm VO1071 / 410mm VO1079) BRAKE DISC.

WHEEL STUD OPTIONS:

WS0009 (OEM 20515514 78mm)
WS0010 (OEM 20515515 88mm)
WS0014 (OEM 20515519 104mm)

HUB0049NB

SUPPLIED WITHOUT BEARING

Specification

(A) OUTER BEARING DIA.:	125
(B) INNER BEARING DIA.:	125**
(C) STUD HOLE DIA.:	25
(D) HEIGHT	220*
(E) OUTER FLANGE DIA.:	384
WEIGHT	35.8 kg

USES FAG BEARING: 22007408, 22007411, FAG 566426.H195, U353-133256, U353-133446

HUB OEM: 222018115, 22036478, 22036498, 22036503, 22491569, 22548422, 7422018115, 7422036498, 7422491569



*Hub is very similar to HUB0008, overall height is 220mm compared to 222mm

HUB0049

SUPPLIED WITH FAG BEARING



HUBKIT0049

SUPPLIED WITH FAG BEARING, ABS RING, BRAKE DISC, STUDS & NUTS

Vehicle Applications

RENAULT PREMIUM
VOLVO BUS
VOLVO FH, FL, FM

FRONT AXLE



** Stub Axle Diameter is 68mm.
See HUB0047 for 58mm Stub Axle Diameter



NOTES: CAN BE FITTED WITH SOLID (434mm VO1083 / 410mm VO1078) or VENTED (434mm VO1071 / 410mm VO1079) BRAKE DISC.

WHEEL STUD OPTIONS:

WS0009 (OEM 20515514 78mm)
WS0011 (OEM 20515516 90mm)

HUB0051NB

SUPPLIED WITHOUT BEARING

Specification

(A) OUTER BEARING DIA.:	148
(B) INNER BEARING DIA.:	148
(C) STUD HOLE DIA.:	24
(D) HEIGHT	149.5
(E) OUTER FLANGE DIA.:	375
WEIGHT	34.5 kg

USES FAG BEARING: 566425.H195

HUB OEM: 1822615, 2290525, 2603319

HUB0051

SUPPLIED WITH FAG BEARING



HUBKIT0051

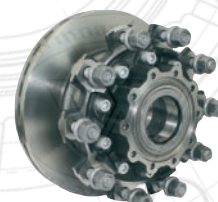
SUPPLIED WITH FAG BEARING, ABS RING, HUB BOLTS, DISC, STUDS & NUTS

Vehicle Applications

SCANIA

ROUND HEAD
WHEEL STUD

REAR AXLE



NOTES: CAN BE FITTED WITH VENTED (SC1023) or SOLID (SC1023S) BRAKE DISC

WHEEL STUD OPTIONS:

WS0022 (OEM 1528712 85mm)

BARE HUB (NO BEARING)

HUB WITH BEARING

WHEEL END KIT

HUB0054NB

SUPPLIED WITHOUT BEARING

Specification

(A) OUTER BEARING DIA.:	130
(B) INNER BEARING DIA.:	130
(C) STUD HOLE DIA.:	19
(D) HEIGHT	141
(E) OUTER FLANGE DIA.:	375
WEIGHT	9.20 kg

USES FAG BEARING: 803194.26.H195

HUB OEM: 1703809

HUB0054

SUPPLIED WITH FAG BEARING



HUBKIT0054

SUPPLIED WITH FAG BEARING, ABS RING, HUB BOLTS, BRAKE DISC , WHEEL STUDS & NUTS

Vehicle Applications

DAF LF45
OPTARE SOLO
WRIGHTBUS STREETLITE

REAR AXLE



DAF



HUB0055NB

SUPPLIED WITHOUT BEARING

Specification

(A) OUTER BEARING DIA.:	110
(B) INNER BEARING DIA.:	110
(C) STUD HOLE DIA.:	19
(D) HEIGHT	133
(E) OUTER FLANGE DIA.:	248
WEIGHT	10.8 kg

USES FAG BEARING: 201079

HUB OEM: 1407582

HUB0055

SUPPLIED WITH FAG BEARING



HUBKIT0055

SUPPLIED WITH FAG BEARING, ABS RING, HUB BOLTS, BRAKE DISC, WHEEL STUDS & NUTS

Vehicle Applications

DAF LF45

REAR AXLE



DAF



HUB0056NB

SUPPLIED WITHOUT BEARING

Specification

(A) OUTER BEARING DIA.:	160
(B) INNER BEARING DIA.:	160
(C) STUD HOLE DIA.:	21
(D) HEIGHT	173
(E) OUTER FLANGE DIA.:	316
WEIGHT	19.6 kg

USES FAG BEARING: 805012.06.H195

HUB OEM: 1400289, 1702952

HUB0056

SUPPLIED WITH FAG BEARING



HUBKIT0056

SUPPLIED WITH FAG BEARING, ABS RING, HUB BOLTS, BRAKE DISC & STUDS

Vehicle Applications

DAF LF45

REAR AXLE



DAF



HUB0057NB

SUPPLIED WITHOUT BEARING

Specification

(A) OUTER BEARING DIA.:	130
(B) INNER BEARING DIA.:	130
(C) STUD HOLE DIA.:	21
(D) HEIGHT	143
(E) OUTER FLANGE DIA.:	316
WEIGHT	14.6 kg

USES FAG BEARING: 803194.26.H195

HUB OEM: 1707742

HUB0057

SUPPLIED WITH FAG BEARING



HUBKIT0057

SUPPLIED WITH FAG BEARING, ABS RING, HUB BOLTS, BRAKE DISC & STUDS

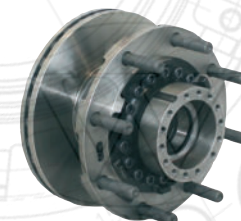
Vehicle Applications

DAF LF45

REAR AXLE



DAF



BARE HUB (NO BEARING)

HUB WITH BEARING

WHEEL END KIT

HUB0058NB

SUPPLIED WITHOUT BEARING

Specification
 (A) OUTER BEARING DIA.: 130
 (B) INNER BEARING DIA.: 130
 (C) STUD HOLE DIA.: 21
 (D) HEIGHT 143
 (E) OUTER FLANGE DIA.: 316
 WEIGHT 18.7 kg

USES FAG BEARING: 803194.26.H195

HUB OEM: 1703813

HUB0058

SUPPLIED WITH FAG BEARING



HUBKIT0058

SUPPLIED WITH FAG BEARING, ABS RING, HUB BOLTS, BRAKE DISC & STUDS

Vehicle Applications

DAF LF45

REAR AXLE



HUB0059NB

SUPPLIED WITHOUT BEARING

Specification
 (A) OUTER BEARING DIA.: 160
 (B) INNER BEARING DIA.: 160
 (C) STUD HOLE DIA.: 22
 (D) HEIGHT 163
 (E) OUTER FLANGE DIA.: 380
 WEIGHT 27 kg

USES FAG BEARING: 803750.10.H195

HUB OEM: 81357010155

HUB0059

SUPPLIED WITH FAG BEARING & ABS



HUBKIT0059

SUPPLIED WITH FAG BEARING, ABS RING, HUB BOLTS, BRAKE DISC & STUDS

Vehicle Applications

MAN TGA 2000-
 MAN TGS 2007-
 MAN TGX 2007-

REAR AXLE



HUB0060NB

SUPPLIED WITHOUT BEARING

Specification
 (A) OUTER BEARING DIA.: -
 (B) INNER BEARING DIA.: -
 (C) STUD HOLE DIA.: -
 (D) HEIGHT -
 (E) OUTER FLANGE DIA.: -
 WEIGHT - kg

USES FAG BEARING: TBC

HUB OEM: 23510504 23510504, 23538437, 24534575

HUB0060

SUPPLIED WITH FAG BEARING & ABS



HUBKIT0060

SUPPLIED WITH FAG BEARING, ABS RING, HUB BOLTS, BRAKE DISC & STUDS

Vehicle Applications

VOLVO FM, FMX 9 & 10 ton axle

FRONT AXLE



HUB0061NB

SUPPLIED WITHOUT BEARING

Specification
 (A) OUTER BEARING DIA.: 127.7
 (B) INNER BEARING DIA.: 127.0
 (C) STUD HOLE DIA.: -
 (D) HEIGHT -
 (E) OUTER FLANGE DIA.: -
 WEIGHT - kg

USES FAG BEARING: 571762.01.H195

HUB OEM: 2296959, 2734954

HUB0061

SUPPLIED WITH FAG BEARING & ABS



HUBKIT0061

SUPPLIED WITH FAG BEARING, ABS RING, HUB BOLTS, BRAKE DISC & STUDS

Vehicle Applications

SCANIA Front

FRONT AXLE



BARE HUB (NO BEARING)**HUB WITH BEARING****WHEEL END KIT****HUB0062NB**

SUPPLIED WITHOUT BEARING

Specification	
(A) OUTER BEARING DIA.:	148
(B) INNER BEARING DIA.:	148
(C) STUD HOLE DIA.:	24
(D) HEIGHT	150
(E) OUTER FLANGE DIA.:	375
WEIGHT	23 kg

USES FAG BEARING: 571762.01.H195

HUB OEM: 2296959, 2734954

HUB0062

SUPPLIED WITH FAG BEARING & ABS

**HUBKIT0062**

SUPPLIED WITH FAG BEARING, ABS RING, WHEEL STUDS & NUTS

Vehicle Applications

SCANIA Rear

WHEEL STUD OPTIONS:
 WS0022OEM 2285279 85mm)
 WS0023OEM 2285282 113mm)

REAR AXLE

ROUND HEAD
WHEEL STUDDRUM
OPTIONS

SC1021 203mm

NOTES: BRAKE DRUM NOT INCLUDED

HUB0063NB

SUPPLIED WITHOUT BEARING

Specification	
(A) OUTER BEARING DIA.:	157
(B) INNER BEARING DIA.:	170
(C) STUD HOLE DIA.:	22
(D) HEIGHT	296
(E) OUTER FLANGE DIA.:	380
WEIGHT	37 kg

USES FAG BEARING: 33022.562158 & 567549

HUB OEM: A946 356 0201, A9463561901

HUB0063

SUPPLIED WITH FAG BEARING & ABS

**HUBKIT0063**

SUPPLIED WITH FAG BEARING, ABS RING, HUB BOLTS, BRAKE DISC, WHEEL STUDS & NUTS

Vehicle Applications

MERCEDES ACTROS 1996-
 MERCEDES ATEGO 1998-
 MERCEDES AXOR 2001-

REAR AXLE

**HUB0064NB**

SUPPLIED WITHOUT BEARING

Specification	
(A) OUTER BEARING DIA.:	130.0
(B) INNER BEARING DIA.:	130.0
(C) STUD HOLE DIA.:	25
(D) HEIGHT	224
(E) OUTER FLANGE DIA.:	383
WEIGHT	42 kg

USES FAG BEARING: TBC

HUB OEM: 23510504, 23538437, 24534575, 24260099
 NEW MULTI WIDTH SPLINED HUB DESIGN

NEW TO RANGE**HUB0064**

SUPPLIED WITH FAG BEARING & ABS

**HUBKIT0064**

SUPPLIED WITH FAG BEARING, ABS RING, HUB BOLTS, BRAKE DISC & STUDS

Vehicle Applications

VOLVO FM, FMX 9 & 10 ton axle

FRONT AXLE



Check
www.winnard.co.uk
 for updates

**HUB0065NB**

SUPPLIED WITHOUT BEARING

Specification	
(A) OUTER BEARING DIA.:	-
(B) INNER BEARING DIA.:	-
(C) STUD HOLE DIA.:	-
(D) HEIGHT	-
(E) OUTER FLANGE DIA.:	-
WEIGHT	- kg

USES FAG BEARING: TBC

HUB OEM: 23510480, 24507583
 NEW MULTI WIDTH SPLINED HUB DESIGN

NEW TO RANGE**HUB0065**

SUPPLIED WITH FAG BEARING & ABS

**HUBKIT0065**

SUPPLIED WITH FAG BEARING, ABS RING, HUB BOLTS, BRAKE DISC & STUDS

Vehicle Applications

VOLVO FM, FMX 9 & 10 ton axle

FRONT AXLE



Check
www.winnard.co.uk
 for updates



BARE HUB (NO BEARING)

HUB WITH BEARING

WHEEL END KIT

HUB0066NB

SUPPLIED WITHOUT BEARING

Specification

(A) OUTER BEARING DIA.:	147
(B) INNER BEARING DIA.:	147
(C) STUD HOLE DIA.:	26
(D) HEIGHT	181
(E) OUTER FLANGE DIA.:	372
WEIGHT	- kg

USES SKF BEARING: VKBA5523

HUB OEM: 09328216, 709328216

NEW TO RANGE

HUB0066

SUPPLIED WITH SKF BEARING WHEEL



HUBKIT0066

SUPPLIED WITH SKF BEARING WHEEL, WHEEL STUDS & NUTS

Vehicle Applications

SAE Gigant 420 x 200 2000-

TRAILER AXLE



DRUM OPTIONS



DU1009 420 x 200

NOTES: BRAKE DRUM NOT INCLUDED

HUB0067NB

SUPPLIED WITHOUT BEARING

Specification

(A) OUTER BEARING DIA.:	147
(B) INNER BEARING DIA.:	147
(C) STUD HOLE DIA.:	26
(D) HEIGHT	158
(E) OUTER FLANGE DIA.:	267
WEIGHT	18 kg

USES SKF BEARING: VKBA5523

HUB OEM: 61LR6E101

NEW TO RANGE

HUB0067

SUPPLIED WITH SKF BEARING & ABS RING



HUBKIT (USE HUB0067)

Vehicle Applications

SAE Gigant

TRAILER AXLE



DRUM TBC



NOTES: BRAKE DRUM NOT INCLUDED

HUB0068NB

SUPPLIED WITHOUT BEARING

Specification

(A) OUTER BEARING DIA.:	120
(B) INNER BEARING DIA.:	150
(C) STUD HOLE DIA.:	22
(D) HEIGHT	190
(E) OUTER FLANGE DIA.:	380
WEIGHT	22.4 kg

USES FAG BEARING: TBC

HUB OEM: 03.272.43.41.0, 09.801.08.36.0

NEW TO RANGE

HUB0068

SUPPLIED WITH FAG BEARING & SERVICE KIT



HUBKIT0068-377 / 430

BPW

SUPPLIED WITH FAG BEARING, HUB SERVICE KIT, BRAKE DISC, STUDS & NUTS

Vehicle Applications

BPW - SKH Series (TSB3709) 2010-
BPW - SKM Series (TSB3709) 2010-

TRAILER AXLE



NOTES: CAN BE FITTED WITH 377mm (BP1039) DISC or 430mm (BP1040) DISC

HUB0069NB

SUPPLIED WITHOUT BEARING

Specification

(A) OUTER BEARING DIA.:	120
(B) INNER BEARING DIA.:	150
(C) STUD HOLE DIA.:	22
(D) HEIGHT	187
(E) OUTER FLANGE DIA.:	380
WEIGHT	22.4 kg

USES FAG BEARING: TBC

HUB OEM: 03.272.43.41.0, 09.801.08.36.0

NEW TO RANGE

HUB0069

SUPPLIED WITH FAG BEARING & SERVICE KIT



HUBKIT0069-430 / 420D

BPW

SUPPLIED WITH FAG BEARING, ABS RING, HUB BOLTS, BRAKE DISC / DRUM, STUDS & NUTS

Vehicle Applications

BPW - 420 x 180 ECOMAX 2001-
BPW - SH Series (TSB4309) 2010-

TRAILER AXLE



NOTES: CAN BE FITTED WITH 430mm (BP1040) DISC or 420x180mm (BP1025) DRUM

BARE HUB (NO BEARING)

HUB WITH BEARING

WHEEL END KIT

HUB0071NB

SUPPLIED WITHOUT BEARING

Specification
 (A) OUTER BEARING DIA.: 130
 (B) INNER BEARING DIA.: 145
 (C) STUD HOLE DIA.: 25.5
 (D) HEIGHT 172
 (E) OUTER FLANGE DIA.: 371.5
 WEIGHT 29 kg

USES FAG BEARING: 524850, 524851A

HUB OEM: FRUEHAUF 6502795D, TRAILOR 0018321C

HUB0071

SUPPLIED WITH FAG BEARING & SERVICE KIT



NEW TO RANGE

HUBKIT0071

HUBKIT NOT YET DEVELOPED

Vehicle Applications

FRUEHAUF: L200/N400 TEM

FRUEHAUF



TRAILER AXLE



DRUM OPTIONS

TR1004 419 x 178
 TR1008 419 x 203
 TR1011 419 x 203
 TR1013 419 x 178

NOTES: BRAKE DRUM NOT INCLUDED

HUB0072NB

SUPPLIED WITHOUT BEARING

Specification
 (A) OUTER BEARING DIA.: 147
 (B) INNER BEARING DIA.: 147
 (C) STUD HOLE DIA.: 25.5
 (D) HEIGHT 152
 (E) OUTER FLANGE DIA.: 376
 WEIGHT 21 kg

USES FAG BEARING: 580779A.J42B

HUB OEM: M007854

NEW TO RANGE

HUB0072

SUPPLIED WITH FAG BEARING



HUBKIT0072-SW / TW

SMB

SUPPLIED WITH FAG BEARINGS, ABS RING, STUDS FOR STEEL (SW) SINGLE or STEEL (TW) TWIN WHEEL STUDS & NUTS

Vehicle Applications

SMB C1 & C2 1985 -



TRAILER AXLE



DRUM OPTIONS

CF1007 419 x 178
 CF1008 419 x 203

NOTES: BRAKE DRUM NOT INCLUDED

HUB0073NB

SUPPLIED WITHOUT BEARING

Specification
 (A) OUTER BEARING DIA.: 147
 (B) INNER BEARING DIA.: 147
 (C) STUD HOLE DIA.: 25.5
 (D) HEIGHT 154.7
 (E) OUTER FLANGE DIA.: 385
 WEIGHT 19 kg

USES FAG BEARING: 580779A.J42B

HUB OEM: CF103694, M200274-01, M069034

NEW TO RANGE

HUB0073

SUPPLIED WITH FAG BEARING



HUBKIT (USE HUB0073)

SMB

Vehicle Applications

FRUEHAUF 419 x 203 SMB L1 1985-
 SMB 419 x 203 SMB L1 1985-



TRAILER AXLE



DRUM OPTION

CF1017 419 x 203

NOTES: BRAKE DRUM NOT INCLUDED

HUB0074NB

SUPPLIED WITHOUT BEARING

Specification
 (A) OUTER BEARING DIA.: 152.6
 (B) INNER BEARING DIA.: 152.6
 (C) STUD HOLE DIA.: 25.5
 (D) HEIGHT 230
 (E) OUTER FLANGE DIA.: 375
 WEIGHT 29 kg

USES FAG BEARING: KHM518445.518410

HUB OEM: DAF 1359555, FRUEHAUF A-JB0038-001, AJB0038001, CF1014228

NEW TO RANGE

HUB0074

SUPPLIED WITH FAG BEARING



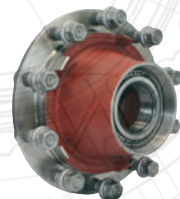
HUBKIT0074-SW / TW

FRUEHAUF

SUPPLIED WITH FAG BEARINGS, ABS RING, STUDS FOR STEEL (SW) SINGLE or STEEL (TW) TWIN WHEEL STUDS & NUTS

Vehicle Applications

FRUEHAUF : PROPARG



TRAILER AXLE



DRUM OPTIONS

CF1001 419 x 178
 CF1003 419 x 178

NOTES: BRAKE DRUM NOT INCLUDED

BARE HUB (NO BEARING)

HUB WITH BEARING

WHEEL END KIT

HUB0075NB

SUPPLIED WITHOUT BEARING

Specification

(A) OUTER BEARING DIA.:	140
(B) INNER BEARING DIA.:	140
(C) STUD HOLE DIA.:	25.5
(D) HEIGHT	158
(E) OUTER FLANGE DIA.:	377
WEIGHT	29 kg

USES FAG BEARING: 805011.03.H195

HUB OEM: MERITOR 14225494, 15225494, 21225494, SCANIA P7103140

NEW TO RANGE

HUB0075

SUPPLIED WITH CARTRIDGE FAG BEARING & SERVICE KIT



HUBKIT0075-377 / 434 MERITOR

SUPPLIED WITH FAG BEARING, ABS RING, HUB BOLTS, BRAKE DISC / DRUM, STUDS & NUTS

Vehicle Applications

MERITOR: LMC D Elsa 2 2005-
MERITOR: LMC DX195 2005-

TRAILER AXLE



NOTES: CAN BE FITTED WITH 377mm (RO1030) or 434mm (RO1028) DISC

HUB0076NB

SUPPLIED WITHOUT BEARING

Specification

(A) OUTER BEARING DIA.:	120
(B) INNER BEARING DIA.:	147
(C) STUD HOLE DIA.:	25.7
(D) HEIGHT	178
(E) OUTER FLANGE DIA.:	378
WEIGHT	21 kg

USES FAG BEARING:

HUB OEM: MERITOR 14204562, 21204561S2, 21204562, 21204562S3, 22204562S1, SCANIA P7103701

NEW TO RANGE

HUB0076

SUPPLIED WITH A/M BEARING & SERVICE KIT



HUBKIT (USE HUB0076)

Vehicle Applications

MERITOR 310 x 190 TM Axle 1980-
MERITOR 350 x 200 BMX Axle 1980-
MERITOR 419 x 178 TM Axle 1980-

TRAILER AXLE



DRUM OPTIONS

MERITOR



RO1009 310 x 190
RO1012 350 x 200
RO1007 419 x 178

NOTES: BRAKE DRUM NOT INCLUDED

HUB0077NB

SUPPLIED WITHOUT BEARING

Specification

(A) OUTER BEARING DIA.:	140
(B) INNER BEARING DIA.:	140
(C) STUD HOLE DIA.:	23.35
(D) HEIGHT	158
(E) OUTER FLANGE DIA.:	376.5
WEIGHT	28.1 kg

USES FAG BEARING:

HUB OEM: MERITOR 14224748, 21224748, P7102582

NEW TO RANGE

HUB0077

SUPPLIED WITH A/M BEARING & SERVICE KIT



HUBKIT0077

SUPPLIED WITH A/M BEARING, SERVICE KIT, WHEEL STUDS & NUTS

Vehicle Applications

MERITOR 419 x 178 Q+ 2000-
MERITOR LC / LM 2000-

TRAILER AXLE



DRUM OPTION

MERITOR



RO1014 419 x 178

NOTES: BRAKE DRUM NOT INCLUDED

HUB0078NB

SUPPLIED WITHOUT BEARING

Specification

(A) OUTER BEARING DIA.:	140
(B) INNER BEARING DIA.:	140
(C) STUD HOLE DIA.:	23.35
(D) HEIGHT	158
(E) OUTER FLANGE DIA.:	377
WEIGHT	29.2 kg

HUB OEM: MERITOR 14225425, 1488209, TOR 21225425, P7102575

NEW TO RANGE

HUB0078

SUPPLIED WITH A/M BEARING



HUBKIT0078

SUPPLIED WITH A/M BEARING, SERVICE KIT, HUB BOLTS, RO1030 BRAKE DISC, WHEEL STUDS & NUTS

Vehicle Applications

MERITOR DX195 2005-
MERITOR LM DX195 2005-
MERITOR LM ELSA 195 2005-

TRAILER AXLE



MERITOR



BARE HUB (NO BEARING)

HUB WITH BEARING

WHEEL END KIT

HUB0081NB

SUPPLIED WITHOUT BEARING

Specification
 (A) OUTER BEARING DIA.: 140
 (B) INNER BEARING DIA.: 140
 (C) STUD HOLE DIA.: 23.15
 (D) HEIGHT 179.5
 (E) OUTER FLANGE DIA.: 376
 WEIGHT 30 kg

USES FAG BEARING:

HUB OEM: MERITOR 14227483, 21227483

NEW TO RANGE

HUB0081

SUPPLIED WITH A/M BEARING



HUBKIT0081

USE HUB0081 - HUBKIT NOT YET DEVELOPED

Vehicle Applications

MERITOR: LMC D Elsa 2 2005-
 MERITOR: LMC DX195 2005-

TRAILER AXLE



MERITOR



NOTES: CAN BE FITTED WITH 377mm (RO1030) or 434mm (RO1028) DISC

HUB0083NB

SUPPLIED WITHOUT BEARING

Specification
 (A) OUTER BEARING DIA.: 130
 (B) INNER BEARING DIA.: 150
 (C) STUD HOLE DIA.: 20.0
 (D) HEIGHT 290
 (E) OUTER FLANGE DIA.: 330
 WEIGHT 21.5 kg

USES FAG BEARING: 33116 & 33020

HUB OEM: MERC A975 423 0112, A976 356 0701, A976 356 1101, A976 356 1801

NEW TO RANGE

HUB0083

SUPPLIED WITH FAG BEARING & SEAL



HUBKIT0083

SUPPLIED WITH FAG BEARINGS, ABS RING, SERVICE KIT, WHEEL STUDS & NUTS

Vehicle Applications

MERCEDES ATEGO 0917-1023 1998-
 MERCEDES ATEGO 1215-1528 1998-

REAR AXLE



MERCEDES



HUB0084NB

SUPPLIED WITHOUT BEARING

Specification
 (A) OUTER BEARING DIA.: 142
 (B) INNER BEARING DIA.: 147
 (C) STUD HOLE DIA.: 22.7
 (D) HEIGHT 176
 (E) OUTER FLANGE DIA.: 271
 WEIGHT 28.1 kg

USES FAG BEARING:

HUB OEM: MERITOR 14203219, 21203219, 21205107

NEW TO RANGE

HUB0084

SUPPLIED WITH A/M BEARING & SERVICE KIT



HUBKIT (USE HUB0084)

Vehicle Applications

MERITOR 310 x 190 TM Axle 1980-
 MERITOR 350 x 200 BMX Axle 1980-

TRAILER AXLE



DRUM OPTIONS

RO1009 310 x 190
 RO1012 350 x 200

NOTES: BRAKE DRUM NOT INCLUDED

MERITOR



HUB0085NB

SUPPLIED WITHOUT BEARING

Specification
 (A) OUTER BEARING DIA.: 147
 (B) INNER BEARING DIA.: 147
 (C) STUD HOLE DIA.: 24
 (D) HEIGHT 213
 (E) OUTER FLANGE DIA.: 375
 WEIGHT 18 kg

USES FAG BEARING: KHM218248.218210

HUB OEM: SCANIA 1942754, 2290538

NEW TO RANGE

HUB0085

SUPPLIED WITH FAG BEARING



HUBKIT0085

SUPPLIED WITH FAG BEARING, ABS RING, WHEEL STUDS & NUTS

Vehicle Applications

SCANIA 4 SERIES 1996-

REAR AXLE



DRUM OPTIONS

SC1021 413 x 203
 SC1017 413 x 254

NOTES: BRAKE DRUM NOT INCLUDED

SCANIA



BARE HUB (NO BEARING) HUB WITH BEARING

HUB0086NB
SUPPLIED WITHOUT BEARING

Specification

(A) OUTER BEARING DIA.:	138
(B) INNER BEARING DIA.:	138
(C) STUD HOLE DIA.:	22
(D) HEIGHT	147
(E) OUTER FLANGE DIA.:	380
WEIGHT	20 kg

USES FAG BEARING:

HUB OEM: SAF 03307304302, 03307304300, 03307304301, 03307304352, 20.3.307.3043.52

NEW TO RANGE

HUB0086
SUPPLIED WITH FAG BEARING



WHEEL END KIT

HUBKIT0086 SAF

SUPPLIED WITH FAG BEARING, ABS RING, WHEEL STUDS & NUTS

Vehicle Applications

SAF 367 x 180 1985-
SAF 420 x 180 2006-
SAF 420 x 200 2006-



TRAILER AXLE



WHEEL STUDS & NUTS NOT FITTED

DRUM
OPTIONS

SAU1011 420 x 180
SAU1013 420 x 200
SAU1029 367 x 180

NOTES: BRAKE DRUM NOT INCLUDED

HUB0087NB
SUPPLIED WITHOUT BEARING

Specification

(A) OUTER BEARING DIA.:	140
(B) INNER BEARING DIA.:	140
(C) STUD HOLE DIA.:	25.5
(D) HEIGHT	189
(E) OUTER FLANGE DIA.:	267
WEIGHT	XX kg

USES FAG BEARING:

HUB OEM: GIGANT 709317876, 9317868, 9317876, 9328152

NEW TO RANGE

HUB0087
SUPPLIED WITH FAG BEARING & SEAL

Check
www.winnard.co.uk
for updates

HUBKIT SAE - GIGANT

USE HUB0087 - HUBKIT NOT YET DEVELOPED

Vehicle Applications

SAF 300 x 200 2006-2018

Check
www.winnard.co.uk
for updates

TRAILER AXLE



WHEEL STUDS & NUTS NOT FITTED

DRUM
OPTION

SAE1008 300 x 200

NOTES: BRAKE DRUM NOT INCLUDED

HUB0089NB
SUPPLIED WITHOUT BEARING

Specification

(A) OUTER BEARING DIA.:	120
(B) INNER BEARING DIA.:	120
(C) STUD HOLE DIA.:	22.0
(D) HEIGHT	125
(E) OUTER FLANGE DIA.:	380
WEIGHT	18 kg

USES FAG BEARING:

HUB OEM: SAF 03307300300, 03307300600, 03307300601

NEW TO RANGE

HUB0089
SUPPLIED WITH FAG BEARING & SEAL



HUBKIT0089 SAF

SUPPLIED WITH FAG BEARINGS, SERVICE KIT, STUDS & NUTS BUT NOT FITTED

Vehicle Applications

SAF 420 x 180 1995-2005



TRAILER AXLE



WHEEL STUDS & NUTS NOT FITTED

DRUM
OPTION

SAU1011 420 x 180

NOTES: BRAKE DRUM NOT INCLUDED

HUB0090NB
SUPPLIED WITHOUT BEARING

Specification

(A) OUTER BEARING DIA.:	138
(B) INNER BEARING DIA.:	138
(C) STUD HOLE DIA.:	22
(D) HEIGHT	148
(E) OUTER FLANGE DIA.:	270
WEIGHT	kg

USES FAG BEARING: 570530.05.AM

HUB OEM: SAF 03307304600, 03307304601, 3.307.3046.00

NEW TO RANGE

HUB0090
SUPPLIED WITH FAG BEARING, SERVICE KIT, ABS RING, STUDS & NUTS



HUBKIT SAF

USE HUB0090 - HUBKIT NOT YET DEVELOPED

Vehicle Applications

SAF 300 x 200 1985-
SAF 367 x 200 1985-

Check
www.winnard.co.uk
for updates

TRAILER AXLE



WHEEL STUDS & NUTS NOT FITTED

DRUM
OPTIONS

SAU1008 300 x 200
SAU1027 367 x 200

NOTES: BRAKE DRUM NOT INCLUDED

BARE HUB (NO BEARING)

HUB WITH BEARING

WHEEL END KIT

HUB0091NB

SUPPLIED WITHOUT BEARING

Specification
 (A) OUTER BEARING DIA.: 120
 (B) INNER BEARING DIA.: 147
 (C) STUD HOLE DIA.: 22
 (D) HEIGHT 184
 (E) OUTER FLANGE DIA.: 270
 WEIGHT 23.5 kg

USES FAG BEARING: 33219 & KHM218248.218210

HUB OEM: SAF 03307205600, 03307205600S

NEW TO RANGE

HUB0091

SUPPLIED WITH FAG BEARINGS, ABS RING, SERVICE KIT WHEEL STUDS & NUTS



HUBKIT0091

SUPPLIED WITH FAG BEARING, SERVICE KIT, ABS RING, STUDS & NUTS

Vehicle Applications

SAF 300 x 150 1970-
 SAF 300 x 200 1970-
 SAF 367 x 200 1970-



TRAILER AXLE



WHEEL STUDS & NUTS NOT FITTED

DRUM OPTIONS

SAU1024 300 x 200
 SAU1027 367 x 200
 SAU1046 300 x 150

NOTES: BRAKE DRUM NOT INCLUDED

HUB0094NB

SUPPLIED WITHOUT BEARING

Specification
 (A) OUTER BEARING DIA.: 157
 (B) INNER BEARING DIA.: 170
 (C) STUD HOLE DIA.: 22.0
 (D) HEIGHT 263
 (E) OUTER FLANGE DIA.: 374
 WEIGHT 30 kg

USES FAG BEARING:

HUB OEM: MERC A942 356 0901, A942 356 1801

NEW TO RANGE

HUB0094

SUPPLIED WITH FAG BEARING & SEAL

Check www.winnard.co.uk for updates

HUBKIT0094

USE HUB0094 - HUBKIT NOT YET DEVELOPED

Vehicle Applications

MERCEDES ACTROS 1996-
 MERCEDES AXOR 2005-
 MERCEDES ECONIC 1998-

REAR AXLE



MERCEDES

Check www.winnard.co.uk for updates

HUB0095NB

SUPPLIED WITHOUT BEARING

Specification
 (A) OUTER BEARING DIA.: 121.44
 (B) INNER BEARING DIA.: 121.44
 (C) STUD DIA.: 19
 (D) HEIGHT 116
 (E) OUTER FLANGE DIA.: 250
 WEIGHT 11 kg

USES FAG BEARING: 805670

HUB OEM: IVECO 42551175, IVECO 7172993

NEW TO RANGE

HUB0095

SUPPLIED WITH FAG BEARING & OIL SEAL



HUBKIT0095

SUPPLIED WITH FAG BEARINGS, BRAKE DISC, SEAL, ABS RING, WHEEL STUDS & NUTS

Vehicle Applications

IVECO EUROCARGO 1991-

REAR AXLE



HUB0096NB

SUPPLIED WITHOUT BEARING

Specification
 (A) OUTER BEARING DIA.: 120
 (B) INNER BEARING DIA.: 130
 (C) STUD HOLE DIA.: 22
 (D) HEIGHT 188.5
 (E) OUTER FLANGE DIA.: 383
 WEIGHT 26 kg

USES FAG BEARING: 538971 & 201057

HUB OEM: IVECO 7180797, 7183906, 7188706

NEW TO RANGE

HUB0096

SUPPLIED WITH FAG BEARINGS & OIL SEAL



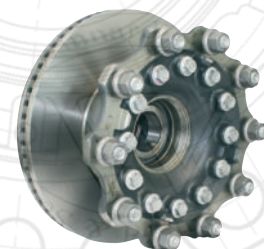
HUBKIT0096

SUPPLIED WITH FAG BEARINGS, BRAKE DISC, SEAL, WHEEL STUDS & NUTS

Vehicle Applications

IVECO EUROCARGO 1998 -
 IVECO EUROSTAR 1998 -
 IVECO EUROTECH 1998 -

FRONT AXLE



BARE HUB (NO BEARING)**HUB WITH BEARING****WHEEL END KIT****HUB0097NB**

SUPPLIED WITHOUT BEARING

Specification	
(A) OUTER BEARING DIA.:	140
(B) INNER BEARING DIA.:	140
(C) STUD HOLE DIA.:	22
(D) HEIGHT	118
(E) OUTER FLANGE DIA.:	286
WEIGHT	27 kg

USES FAG BEARING: 805003A.H195

HUB OEM: MERCEDES A970 350 0435, A970 356 0501

NEW TO RANGE**HUB0097**

SUPPLIED WITH FAG BEARINGS

**HUBKIT0097**

SUPPLIED WITH FAG BEARINGS, - KIT DETAILS TO BE CONFIRMED

Vehicle Applications

MERC ATEGO 1998-
MERC ATEGO 2 2004-
MERC ATEGO 2013-

REAR AXLE**MERCEDES****HUB0098NB**

SUPPLIED WITHOUT BEARING

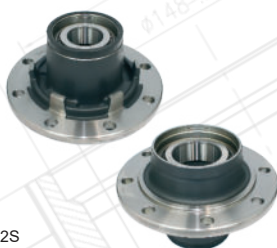
Specification	
(A) OUTER BEARING DIA.:	120
(B) INNER BEARING DIA.:	150
(C) STUD HOLE DIA.:	22
(D) HEIGHT	206
(E) OUTER FLANGE DIA.:	320
WEIGHT	20.75 kg

USES FAG BEARING: TBC

HUB OEM: 0327246302, BPW 0980106592S

NEW TO RANGE**HUB0098**

SUPPLIED WITH FAG BEARING

**HUBKIT0098**

SUPPLIED WITH FAG BEARING, KIT DETAILS TO BE CONFIRMED

Vehicle Applications

BPW - ECO Plus (SB3745) 1998-
BPW - SKH Series (SB3745) 1998-

TRAILER AXLEDRUM
OPTION

TBC

HUB0099NB

SUPPLIED WITHOUT BEARING

Specification	
(A) OUTER BEARING DIA.:	130
(B) INNER BEARING DIA.:	130
(C) STUD HOLE DIA.:	22
(D) HEIGHT	304
(E) OUTER FLANGE DIA.:	380
WEIGHT	37.00kg

USES FAG BEARING: 33116 & 33020

HUB OEM: MERCEDES A958 356 0501

NEW TO RANGE**HUB0099**

SUPPLIED WITH FAG BEARINGS

**HUBKIT0099**

SUPPLIED WITH FAG BEARINGS, SERVICE KIT, HUB BOLTS, BRAKE DISC, STUDS & NUTS

Vehicle Applications

MERC Antos 2012-
MERC Actros MP4 2011-
MERC Axor 2 2004-

REAR AXLE**MERITOR****HUB0100NB**

SUPPLIED WITHOUT BEARING

Specification	
(A) OUTER BEARING DIA.:	140
(B) INNER BEARING DIA.:	140
(C) STUD HOLE DIA.:	23.5
(D) HEIGHT	158
(E) OUTER FLANGE DIA.:	377
WEIGHT	XXkg

USES FAG BEARING: 805003A.H195

HUB OEM: GIGANT 716000001

NEW TO RANGE**HUB0100**

SUPPLIED WITH FAG BEARING & SEAL

**HUBKIT0100**

SUPPLIED WITH FAG BEARING, ABS RING, WHEEL STUDS & NUTS

Vehicle Applications

GIGANT GOKH2 3515-

TRAILER AXLEDRUM
OPTION

DU1002 355 x 150

BARE HUB (NO BEARING)

HUB WITH BEARING

WHEEL END KIT

HUB0101NB

SUPPLIED WITHOUT BEARING

Specification	
(A) OUTER BEARING DIA.:	140
(B) INNER BEARING DIA.:	140
(C) STUD HOLE DIA.:	23.5
(D) HEIGHT	158
(E) OUTER FLANGE DIA.:	377
WEIGHT	XXkg

USES FAG BEARING: 805003A.H195

HUB OEM: MERITOR 14225290, 212252900

HUB0101

SUPPLIED WITH FAG BEARING & SEAL



HUBKIT0101

SUPPLIED WITH FAG BEARING, SERVICE KIT, WHEEL STUDS & NUTS

Vehicle Applications

MERITOR LMC 2000-

MERITOR



RO1014 419 x 178

TRAILER AXLE



DRUM OPTION

NOTES: BRAKE DRUM NOT INCLUDED

NEW TO RANGE

CrossReference	Winnard
309820	HUB0036NB
1026659	HUB0008NB
1026662	HUB0009NB
1026757	HUB0042NB
1026798	HUB0008NB
1283975	HUB0028NB
1348433	HUB0028NB
1382884	HUB0031NB
1388905	HUB0003NB
1388905	HUB0004NB
1388906	HUB0001NB
1389061	HUB0002NB
1391617	HUB0002NB
1400289	HUB0056NB
1404470	HUB0039NB
1405845	HUB0037NB
1407382	HUB0039NB
1407582	HUB0055NB
1408100	HUB0037NB
1428396	HUB0016NB
1613331	HUB0016NB
1657637	HUB0001NB
1659576	HUB0001NB
1691621	HUB0004NB
1699327	HUB0004NB
1702952	HUB0056NB
1703809	HUB0054NB
1703813	HUB0058NB
1724790	HUB0046NB
1800283	HUB0032NB
1801592	HUB0004NB
1801592	HUB0004NB
1801595	HUB0003NB
1801595	HUB0004NB
1812160	HUB0016NB
1812161	HUB0001NB
1818003	HUB0002NB
1818004	HUB0004NB
1822615	HUB0051NB
1824517	HUB0062NB
1827751	HUB0004NB
1864428	HUB0036NB
1864430	HUB0035NB
1956105	HUB0002NB
2015330	HUB0004NB
2015333	HUB0002NB
2019789	HUB0004NB
2019802	HUB0001NB

CrossReference	Winnard
2019833	HUB0016NB
2019853	HUB0002NB
2033821	HUB0001NB
2085471	HUB0036NB
2104395	HUB0001NB
2120485	HUB0002NB
2290525	HUB0051NB
2290526	HUB0035NB
2290531	HUB0062NB
2290532	HUB0036NB
2290542	HUB0032NB
2296959	HUB0061NB
2603319	HUB0051NB
2603321	HUB0035NB
2734954	HUB0061NB
2743252	HUB0036NB
3092719	HUB0005NB
3500535	HUB0017NB
3502335	HUB0038NB
3988674	HUB0041NB
3988774	HUB0029NB
3988774	HUB0040NB
3988774	HUB0019NB
3988830	HUB0005NB
3988831	HUB0005NB
3988833	HUB0012NB
3988834	HUB0012NB
3988930	HUB0008NB
3989341	HUB0008NB
3989919	HUB0011NB
9328084	HUB0080NB
9328216	HUB0066NB
14227483	HUB0081NB
20476383	HUB0012NB
20476519	HUB0040NB
20516196	HUB0013NB
20516196	HUB0013NB
20516388	HUB0008NB
20516966	HUB0012NB
20517168	HUB0009NB
20518053	HUB0029NB
20518054	HUB0040NB
20518092	HUB0041NB
20534900	HUB0013NB
20534900	HUB0013NB
20534901	HUB0013NB
20534901	HUB0013NB
20534901	HUB0013NB
20535202	HUB0008NB

CrossReference	Winnard
20535207	HUB0033NB
20535237	HUB0014NB
20535244	HUB0029NB
20535245	HUB0029NB
20535263	HUB0007NB
20567112	HUB0008NB
20567389	HUB0007NB
20567394	HUB0007NB
20720735	HUB0013NB
20720736	HUB0013NB
20819804	HUB0033NB
20819806	HUB0033NB
20819826	HUB0009NB
20819830	HUB0009NB
20820402	HUB0033NB
21022433	HUB0013NB
21022433	HUB0013NB
21022434	HUB0013NB
21024155	HUB0041NB
21024174	HUB0013NB
21024178	HUB0013NB
21024179	HUB0013NB
21024180	HUB0013NB
21024181	HUB0013NB
21024188	HUB0014NB
21024196	HUB0047NB
21024220	HUB0008NB
21024222	HUB0008NB
21024226	HUB0008NB
21102556	HUB0021NB
21102559	HUB0021NB
21102564	HUB0021NB
21102566	HUB0021NB
21116389	HUB0008NB
21116569	HUB0008NB
21116570	HUB0008NB
21116583	HUB0008NB
21116585	HUB0008NB
21116588	HUB0008NB
21227483	HUB0081NB
21259204	HUB0021NB
21259208	HUB0021NB
21328177	HUB0033NB
21328181	HUB0033NB
21328195	HUB0007NB
21336855	HUB0029NB
21336856	HUB0029NB
21336857	HUB0029NB

CrossReference	Winnard
21550437	HUB0021NB
21881346	HUB0007NB
21881391	HUB0007NB
21881399	HUB0007NB
21885968	HUB0029NB
21940776	HUB0047NB
21946101	HUB0047NB
21953590	HUB0047NB
21983587	HUB0047NB
21983594	HUB0047NB
21993643	HUB0047NB
22018115	HUB0049NB
22036478	HUB0049NB
22036498	HUB0049NB
22036503	HUB0049NB
22036891	HUB0007NB
22037077	HUB0007NB
22491569	HUB0049NB
22491741	HUB0007NB
22548422	HUB0049NB
23440705	HUB0021NB
24298870	HUB0047NB
24336513	HUB0007NB
85101818	HUB0005NB
85101841	HUB0012NB
85104298	HUB0012NB
85105692	HUB0011NB
85105693	HUB0005NB
85105694	HUB0018NB
85105695	HUB0019NB
85105696	HUB0012NB
85107749	HUB0013NB
85107750	HUB0008NB
85107751	HUB0014NB
85107752	HUB0009NB
85107753	HUB0007NB
85109244	HUB0009NB
85111448	HUB0008NB
85111789	HUB0013NB
85111790	HUB0014NB
85111791	HUB0008NB
85111792	HUB0011NB
85111793	HUB0018NB
85111794	HUB0005NB
85114470	HUB0008NB
85114471	HUB0005NB
709328216	HUB0066NB

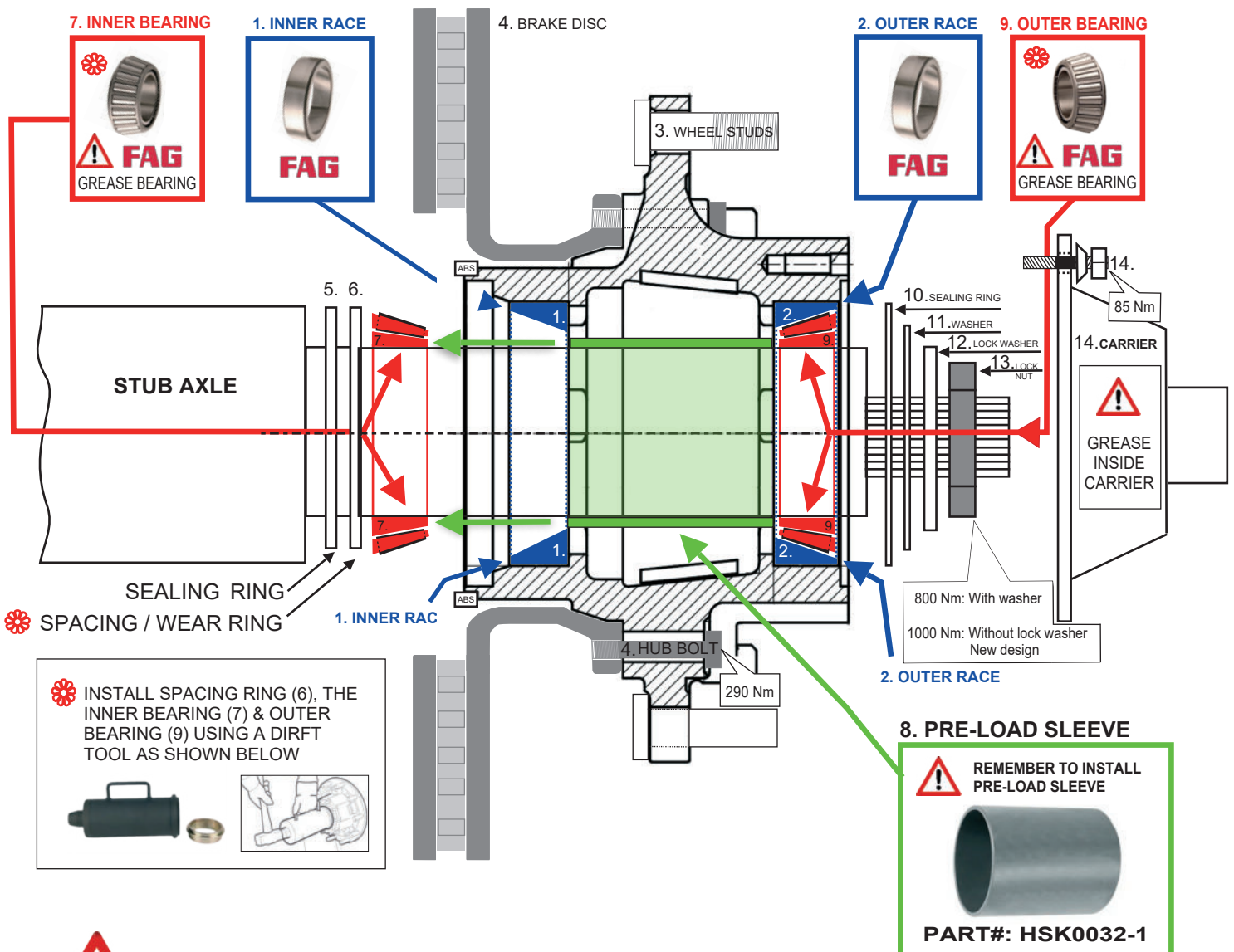
CrossReference	Winnard
742102198	HUB0014NB
742102406	HUB0008NB
3307303000	HUB0015NB
3307303001	HUB0015NB
3307303002	HUB0015NB
3307303052	HUB0015NB
3307305600	HUB0044NB
3307305600	HUB0044NB
3307305601	HUB0044NB
3307305602	HUB0044NB
3307305603	HUB0044NB
3307305653	HUB0044NB
7410241087	HUB0024NB
7420499371	HUB0026NB
7420516196	HUB0013NB
7420516923	HUB0014NB
7420535202	HUB0008NB
7420535202	HUB0008NB
7420535263	HUB0007NB
7420819826	HUB0009NB
7420819828	HUB0009NB
7420819834	HUB0048NB
7420819853	HUB0026NB
7420819858	HUB0026NB
7420819859	HUB0026NB
7420819860	HUB0026NB
7420820402	HUB0033NB
7420820420	HUB0042NB
7421021381	HUB0024NB
7421022433	HUB0013NB
7421024183	HUB0008NB
7421024188	HUB0014NB
7421024199	HUB0014NB
7421024206	HUB0008NB
7421102556	HUB0021NB
7421102559	HUB0021NB
7421102564	HUB0021NB
7421116569	HUB0008NB
7421116570	HUB0008NB
7421116570	HUB0008NB
7421116591	HUB0049NB
7421166455	HUB0009NB
7421259204	HUB0021NB
7421259208	HUB0021NB
7421328181	HUB0033NB
7421534388	HUB0008NB
7421535963	HUB0008NB

CrossReference	Winnard
7421536050	HUB0009NB
7421536188	HUB0009NB
7421536223	HUB0009NB
7421550437	HUB0021NB
7421881346	HUB0007NB
7421892566	HUB0007NB
7421892569	HUB0007NB
7421940776	HUB0047NB
7421946101	HUB0047NB
7421983587	HUB0047NB
7421983590	HUB0047NB
7421993642	HUB0047NB
7422018115	HUB0049NB
7422036478	HUB0049NB
7422036498	HUB0049NB
7422036891	HUB0007NB
7422036892	HUB0007NB
7422105673	HUB0007NB
7422106237	HUB0008NB
7422106238	HUB0008NB
7422106240	HUB0008NB
7422106241	HUB0008NB
7422491569	HUB0049NB
7422548422	HUB0049NB
7422565972	HUB0008NB
7422565974	HUB0008NB
7423440705	HUB0021NB
7424336498	HUB0026NB
7428019822	HUB0042NB
7485109244	HUB0009NB
7485110608	HUB0026NB
7485111790	HUB0014NB
7485114470	HUB0008NB
7485114470	HUB0008NB
9463500535	HUB0017NB
9463560401	HUB0017NB
9463560501	HUB0017NB
81357010155	HUB0059NB
03434312701S3	HUB0015NB
1697346R	HUB0004NB
2019802R	HUB0001NB
2019853R	HUB0002NB
2109324R	HUB0001NB
61LR6E101	HUB0067NB
7422018420S4	HUB0007NB
A0003500535	HUB0038NB
A0003502335	HUB0038NB

WINNARD

INSTALLATION BULLETIN FOR SCANIA REAR WHEEL HUBS FITTED WITH FAG KHM218248.218210 (FAG0017) TAPPER ROLLER BEARINGS

1. To ensure the correct operation of the bearings it is vital that inner bearing (7) & outer bearing (9) are packed with the vehicle manufacturers recommended grease.
2. The pre-load sleeve (8) MUST be fitted. This sleeve prevents torque being transferred to the bearing rollers. Pre-load sleeve part number: 1507770, Winnard HSK0032-1.
3. This bulletin is highlighting the importance of installing the pre-load sleeve and correctly greasing the bearings. When carrying out a hub / wheel bearing replacement it is essential to adhere to the manufacturers installation guidelines and examine the vehicles overall condition.



FAILURE TO FOLLOW THE INSTALLATION PROCEDURE CAN CAUSE PREMATURE BEARING FAILURE

Thos. Winnard & Sons Ltd & Winnard France 2024 www.winnard.co.uk
Original Equipment Manufacturers part numbers are used for reference purposes only and do not imply that their parts will be supplied.

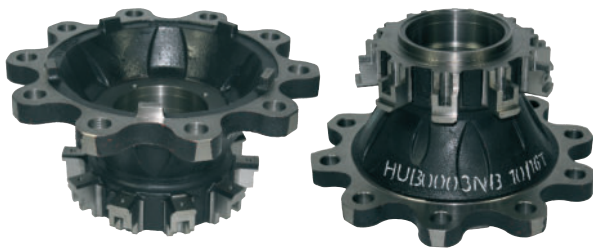
WINNARD

TECHNICAL BULLETIN

DAF 7.5T FRONT / TRAILING WHEEL HUB

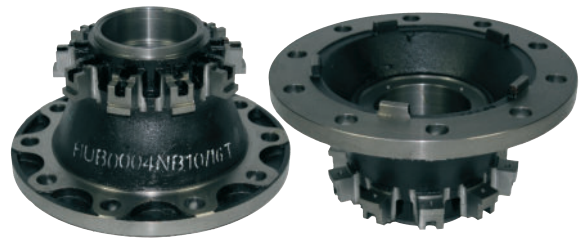
Identifying the difference between DAF 7.5 Ton Front Hubs.

OLD HUB (PETAL) DESIGN



WINNARD HUB0003
OEM 1388905, 1391615
USES FAG BEARING 566834.H195

NEW HUB (ROUND) DESIGN



WINNARD HUB0004
OEM 1818004, 1699327, 2019789
USES FAG BEARING 566074.H195



Note: The O.E. and WINNARD hubs have different wheel flange shapes, and other manufacturers may not always adhere to these designs. Therefore, it is advisable to check the outer bearing diameter to ensure you identify the correct part.

To double-check this, you can measure the outer location diameter of the hub cap.

HUB0003 is 120 mm - HUB0004 125 mm

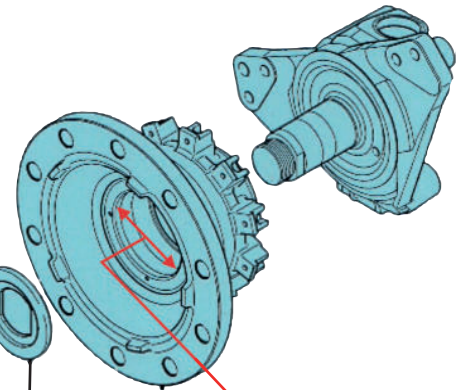
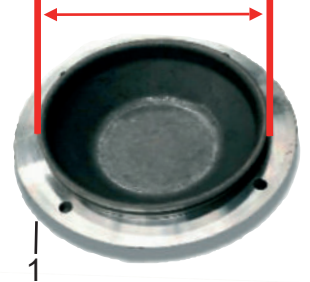
HUB0004, can be fitted in place of HUB0003, if service kit HSK0004 is also installed.

A service kit is also available for HUB0003, our part# HSK0003.

DESCRIPTION	ITEM	KIT PARTS FOR HUB HUB0003	KIT PARTS FOR HUB HUB0004
HUB CAP	1	1339107	1691965
O-Ring	2	393841	1692506
Axle Nut	3	1396608	1697215
Locking Plate	4	1385327	1692215
WINNARD SERVICE KIT PART#	1-4	HSK0003	HSK0004

HUB CAP LOCATION DIAMETER

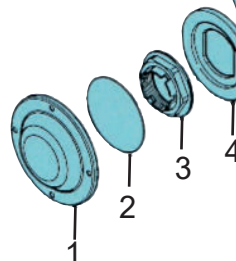
120mm or 125mm



OUTER BEARING DIAMETER
HUB0003 = 120mm
HUB0004 = 125mm



When installing HUB0004, on an old axle, mount the locking plate so that the axle nut (3) fits in the recess.



WINNARD

ECE R90 APPROVED BRAKING COMPONENTS

BRAKE DISCS

BRAKE PADS

BRAKE DRUMS

BRAKE LININGS

WEAR LEADS

HUBS & HUBKITS

BRAKE SHOES & LINED KITS

ABS RINGS & FITTING KITS

Thos. Winnard & Sons Ltd
Mangham Road
Barbot Hall Ind Est
Rotherham
UK S62 6EF
Tel: +44 1709 712000
Email: sales@winnard.co.uk

UK



FRANCE

Winnard France SAS
12 Rue des Tourneballets
28110 Lucé FRANCE
Tel: +33 234400401
Email: commande@winnard.fr



ECE R90 APPROVED

DESIGNED & TESTED IN THE UK

SCHAEFFLER
FAG
BEARINGS